

Recombinant Human VEGFA protein, His-Avi-tagged

Cat. No. VEGFA-4633H **Lot. No.** (See product label)

SPECIFICATION

Product Overview	Recombinant Human VEGFA protein(P15692-4)(Ala27-Arg191), fused with C-terminal His and Avi tag, was expressed in HEK293.
Species	Human
Source	HEK293
ProteinLength	Ala27-Arg191
Tag	C-His-Avi
Form	Lyophilized from 0.22µm filtered solution in PBS (pH 7.4). Normally 5% trehalose is added as protectant before lyophilization.
Bio-activity	Immobilized Human VEGF165 at 0.5 µg/ml (100 µl/well) on the plate. Dose response curve for Anti-VEGF165 Antibody, hFc Tag with the EC50 of 4.1 ng/ml determined by ELISA.
Molecular Mass	The protein has a predicted MW of 22.2 kDa. Due to glycosylation, the protein migrates to 28-32 kDa based on Tris-Bis PAGE result.
Endotoxin	Less than 1EU per µg by the LAL method.
Purity	> 95% as determined by Tris-Bis PAGE

 Tel: 1-631-559-9269 1-516-512-3133

 Email: info@creative-biomart.com  Fax: 1-631-938-8127

 45-1 Ramsey Road, Shirley, NY 11967, USA

Storage Reconstituted protein stable at -80°C for 12 months, 4°C for 1 week. Use a manual defrost freezer and avoid repeated freeze-thaw cycles.

Reconstitution Centrifuge tubes before opening. Reconstituting to a concentration more than 100 µg/ml is recommended. Dissolve the lyophilized protein in distilled water.

GENE INFORMATION

Gene Name VEGFA vascular endothelial growth factor A [Homo sapiens]

Official Symbol VEGFA

Synonyms VEGFA; vascular endothelial growth factor A; vascular endothelial growth factor , VEGF; VEGF A; VPF; vascular permeability factor; VEGF; MVCD1; MGC70609;

Gene ID 7422

mRNA Refseq NM_001025366

Protein Refseq NP_001020537

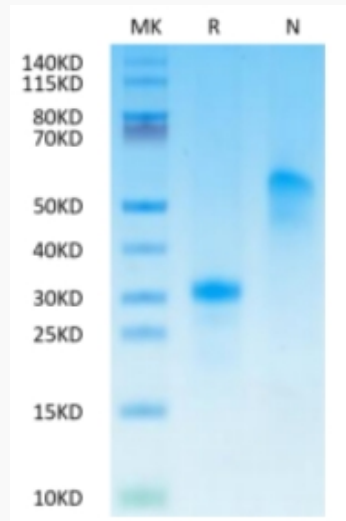
UniProt ID P15692

 Tel: 1-631-559-9269 1-516-512-3133

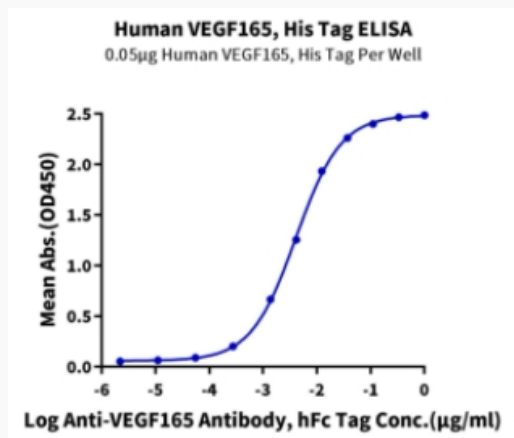
 Email: info@creative-biomart.com  Fax: 1-631-938-8127

 45-1 Ramsey Road, Shirley, NY 11967, USA

Tris-Bis PAGE



ELISA Data



 Tel: 1-631-559-9269 1-516-512-3133

 Email: info@creative-biomart.com  Fax: 1-631-938-8127

 45-1 Ramsey Road, Shirley, NY 11967, USA