

# Recombinant Human VEGFA protein, His-tagged, For Organoid Culture

Cat. No. VEGFA-5633H Lot. No. (See product label)

## SPECIFICATION

<b>Product Overview</b>	Recombinant Human VEGFA protein(P15692-4)(Ala27-Arg191) is expressed in HEK293 with a 6His tag at N-terminus.
<b>Species</b>	Human
<b>Source</b>	HEK293
<b>ProteinLength</b>	Ala27-Arg191
<b>Tag</b>	N-His
<b>Form</b>	Lyophilized from a 0.2 µm filtered solution of 20mM PB, 150mM NaCl, pH7.2.
<b>Bio-activity</b>	Loaded Human VEGF-A Antibody (Bevacizumab) on Pro-A Biosensor, can bind Recombinant Human VEGF165 (N-6His) with an affinity constant of 2.11 pM as determined in BLI assay.
<b>Molecular Mass</b>	20 KDa
<b>Endotoxin</b>	< 1 EU/µg as determined by LAL test.
<b>Purity</b>	Greater than 95% as determined by reducing SDS-PAGE.
<b>Storage</b>	Lyophilized protein should be stored at ≤ -20°C, stable for one year after receipt.

 Tel: 1-631-559-9269 1-516-512-3133

 Email: [info@creative-biomart.com](mailto:info@creative-biomart.com)  Fax: 1-631-938-8127

 45-1 Ramsey Road, Shirley, NY 11967, USA

Reconstituted protein solution can be stored at 2-8°C for 2-7 days. Aliquots of reconstituted samples are stable at ≤ -20°C for 3 months.

**Reconstitution**

Always centrifuge tubes before opening. Do not mix by vortex or pipetting. It is not recommended to reconstitute to a concentration less than 100µg/ml. Dissolve the lyophilized protein in distilled water. Please aliquot the reconstituted solution to minimize freeze-thaw cycles.

## GENE INFORMATION

**Gene Name** [CCR5 chemokine \(C-C motif\) receptor 5 \(gene/pseudogene\) \[ Homo sapiens \]](#)

**Official Symbol** [CCR5](#)

**Synonyms**

CCR5; chemokine (C-C motif) receptor 5 (gene/pseudogene); chemokine (C C motif) receptor 5 , CMKBR5; C-C chemokine receptor type 5; CC CKR 5; CD195; CKR 5; CKR5; IDDM22; chemr13; HIV-1 fusion coreceptor; chemokine receptor CCR5; C-C motif chemokine receptor 5 A159A; CCR-5; CKR-5; CCCKR5; CMKBR5; CC-CKR-5; FLJ78003;

**Gene ID** [1234](#)

**mRNA Refseq** [NM\\_000579](#)

**Protein Refseq** [NP\\_000570](#)

**MIM** [601373](#)

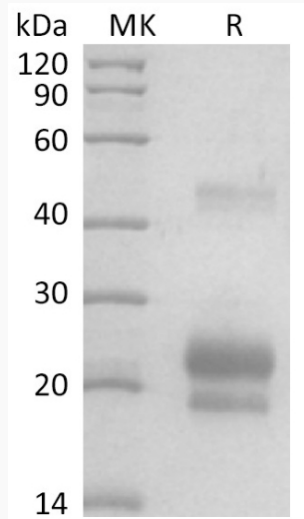
**UniProt ID** [P51681](#)

 Tel: 1-631-559-9269 1-516-512-3133

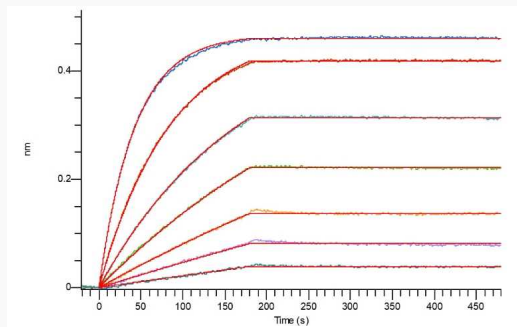
 Email: [info@creative-biomart.com](mailto:info@creative-biomart.com)  Fax: 1-631-938-8127

 45-1 Ramsey Road, Shirley, NY 11967, USA

**SDS-PAGE**



**BLI Activity**



 Tel: 1-631-559-9269 1-516-512-3133

 Email: [info@creative-biomart.com](mailto:info@creative-biomart.com)  Fax: 1-631-938-8127

 45-1 Ramsey Road, Shirley, NY 11967, USA