

Recombinant Human VEGFA protein, His-Avi-tagged, Biotinylated

Cat. No. VEGFA-5743H **Lot. No.** (See product label)

SPECIFICATION

Product Overview	Biotinylated Recombinant Human VEGFA protein(P15692-9)(Ala27-Arg147), fused with C-terminal His and Avi tag, was expressed in HEK293.
Species	Human
Source	HEK293
ProteinLength	Ala27-Arg147
Tag	C-His-Avi
Conjugation/Label	Biotin
Form	Lyophilized from 0.22µm filtered solution in PBS (pH 7.4). Normally 8% trehalose is added as protectant before lyophilization.
Bio-activity	Immobilized Human VEGF R1, His Tag at 2ug/ml (100ul/well) on the plate. Dose response curve for Biotinylated Human VEGF121, His Tag with the EC50 of 16.5ng/ml determined by ELISA.
Molecular Mass	The protein has a predicted MW of 17 kDa. Due to glycosylation, the protein migrates to 18 kDa/22-25 kDa based on Tris-Bis PAGE result.
Endotoxin	Less than 1EU per µg by the LAL method.

 Tel: 1-631-559-9269 1-516-512-3133

 Email: info@creative-biomart.com  Fax: 1-631-938-8127

 45-1 Ramsey Road, Shirley, NY 11967, USA

Purity	> 95% as determined by Tris-Bis PAGE;> 95% as determined by HPLC
Storage	Reconstituted protein stable at -80°C for 12 months, 4°C for 1 week. Use a manual defrost freezer and avoid repeated freeze-thaw cycles.
Reconstitution	Centrifuge tubes before opening. Reconstituting to a concentration more than 100 µg/ml is recommended. Dissolve the lyophilized protein in distilled water.
Conjugation	Biotin

GENE INFORMATION

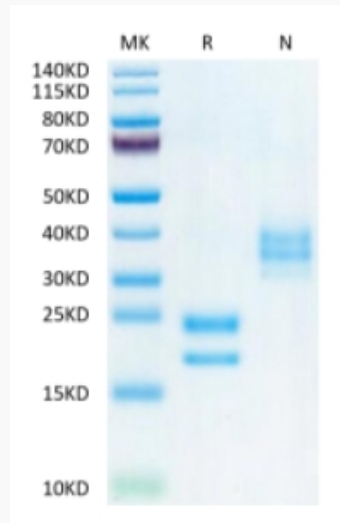
Gene Name	VEGFA vascular endothelial growth factor A [Homo sapiens]
Official Symbol	VEGFA
Synonyms	VEGFA; vascular endothelial growth factor A; vascular endothelial growth factor , VEGF; VEGF A; VPF; vascular permeability factor; VEGF; MVCD1; MGC70609;
Gene ID	7422
mRNA Refseq	NM_001025366
Protein Refseq	NP_001020537
UniProt ID	P15692

 Tel: 1-631-559-9269 1-516-512-3133

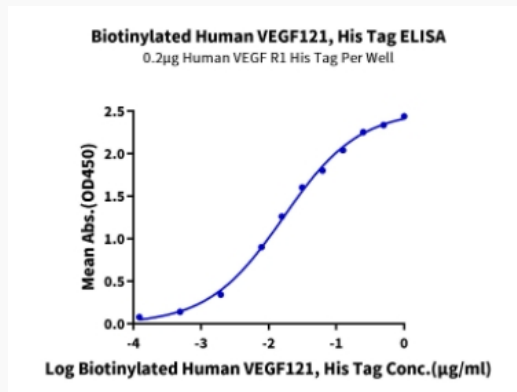
 Email: info@creative-biomart.com  Fax: 1-631-938-8127

 45-1 Ramsey Road, Shirley, NY 11967, USA

Tris-Bis PAGE



ELISA Data



 Tel: 1-631-559-9269 1-516-512-3133

 Email: info@creative-biomart.com  Fax: 1-631-938-8127

 45-1 Ramsey Road, Shirley, NY 11967, USA