

## Recombinant Human VEGFB Protein (22-207 aa), His-tagged

Cat. No. VEGFB-1554H Lot. No. (See product label)

### SPECIFICATION

<b>Product Overview</b>	Recombinant Human VEGFB Protein (22-207 aa) is produced by Yeast expression system. This protein is fused with a 6xHis tag at the N-terminal. Research Area: Cancer. Protein Description: Full Length of Mature Protein.
<b>Species</b>	Human
<b>Source</b>	Yeast
<b>ProteinLength</b>	22-207 aa
<b>Description</b>	Growth factor for endothelial cells. VEGF-B167 binds heparin and neuropilin-1 whereas the binding to neuropilin-1 of VEGF-B186 is regulated by proteolysis.
<b>Form</b>	Tris-based buffer,50% glycerol
<b>Molecular Mass</b>	21.4 kDa
<b>AA Sequence</b>	PVSQPDAPGHQRKVVSWIDVYTRATCQPREVVVPLTVELMGTVAKQLVPSCVTVQ RCGGCCPDDGLECVPTGQHQVRMQILMIRYPSSQLGEMSLEEHSQCECRPKKKDS AVKPDRAATPHHRPQPRSVPGWDSAPGAPSPADITHPTPAPGPSAHAAPSTTSALT PGPAAAAADAAASSVAKGGA
<b>Purity</b>	> 90% as determined by SDS-PAGE.
<b>Notes</b>	Repeated freezing and thawing is not recommended. Store working aliquots at 4

 Tel: 1-631-559-9269 1-516-512-3133

 Email: [info@creative-biomart.com](mailto:info@creative-biomart.com)  Fax: 1-631-938-8127

 45-1 Ramsey Road, Shirley, NY 11967, USA

centigrade for up to one week.

**Storage**

The shelf life is related to many factors, storage state, buffer ingredients, storage temperature and the stability of the protein itself. Generally, the shelf life of liquid form is 6 months at -20 centigrade/-80 centigrade. The shelf life of lyophilized form is 12 months at -20 centigrade/-80 centigrade.

**Concentration**

A hardcopy of COA with reconstitution instruction is sent along with the products.

## GENE INFORMATION

**Gene Name** VEGFB vascular endothelial growth factor B [ Homo sapiens ]

**Official Symbol** VEGFB

**Synonyms** VEGFB; VRF; VEGFL; VEGF-related factor;

**Gene ID** 7423

**mRNA Refseq** NM\_001243733

**Protein Refseq** NP\_001230662

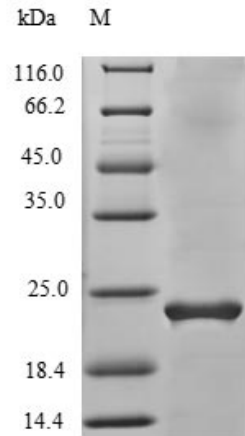
**MIM** 601398

**UniProt ID** P49765


 Tel: 1-631-559-9269 1-516-512-3133

 Email: [info@creative-biomart.com](mailto:info@creative-biomart.com)  Fax: 1-631-938-8127

 45-1 Ramsey Road, Shirley, NY 11967, USA



(Tris-Glycine gel) Discontinuous SDS-PAGE (reduced) with 5% enrichment gel and 15% separation gel.

 Tel: 1-631-559-9269 1-516-512-3133

 Email: [info@creative-biomart.com](mailto:info@creative-biomart.com)  Fax: 1-631-938-8127

 45-1 Ramsey Road, Shirley, NY 11967, USA