

## Recombinant Human VEGFB protein

Cat. No. VEGFB-785H Lot. No. (See product label)

### SPECIFICATION

<b>Product Overview</b>	Recombinant Human VEGFB protein(P49765)(31-129aa) was expressed in E.coli.
<b>Species</b>	Human
<b>Source</b>	E.coli
<b>ProteinLength</b>	31-129a.a.
<b>Tag</b>	Non
<b>Form</b>	If the delivery form is liquid, the default storage buffer is Tris/PBS-based buffer, 5%-50% glycerol. If the delivery form is lyophilized powder, the buffer before lyophilization is Tris/PBS-based buffer, 6% Trehalose, pH 8.0.
<b>Molecular Mass</b>	11.3 kDa
<b>Purity</b>	Greater than 90% as determined by SDS-PAGE.
<b>Storage</b>	Store at -20°C/-80°C upon receipt, aliquoting is necessary for mutiple use. Avoid repeated freeze-thaw cycles.
<b>Reconstitution</b>	We recommend that this vial be briefly centrifuged prior to opening to bring the contents to the bottom. Please reconstitute protein in deionized sterile water to a concentration of 0.1-1.0 mg/mL.We recommend to add 5-50% of glycerol (final concentration) and aliquot for long-term storage at -20°C/-80°C.

 Tel: 1-631-559-9269 1-516-512-3133

 Email: [info@creative-biomart.com](mailto:info@creative-biomart.com)  Fax: 1-631-938-8127

 45-1 Ramsey Road, Shirley, NY 11967, USA

**AA Sequence** HQRKVVSWIDVYTRATCQPREVVVPLTVELMGTVAKQLVPSCVTVQRCGGCCPDD  
GLECVPTGQHQVRMQILMIRYPSSQLGEMSLEEHSQCECRPKKK

## GENE INFORMATION

**Gene Name** VEGFB vascular endothelial growth factor B [ Homo sapiens ]

**Official Symbol** VEGFB

**Synonyms** VEGFB; vascular endothelial growth factor B; VRF; VEGFL; VEGF-related factor;

**Gene ID** 7423

**mRNA Refseq** NM\_001243733

**Protein Refseq** NP\_001230662

**MIM** 601398

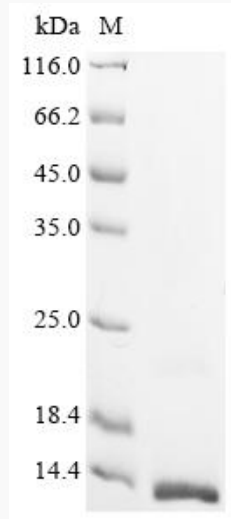
**UniProt ID** P49765

 Tel: 1-631-559-9269 1-516-512-3133

 Email: [info@creative-biomart.com](mailto:info@creative-biomart.com)  Fax: 1-631-938-8127

 45-1 Ramsey Road, Shirley, NY 11967, USA

**SDS-PAGE**



 Tel: 1-631-559-9269 1-516-512-3133

 Email: [info@creative-biomart.com](mailto:info@creative-biomart.com)  Fax: 1-631-938-8127

 45-1 Ramsey Road, Shirley, NY 11967, USA