

## Active Recombinant Human VEGFC protein, His-tagged

Cat. No. VEGFC-211H Lot. No. (See product label)

### SPECIFICATION

<b>Product Overview</b>	Active Recombinant Human VEGFC protein(NP_005420.1)(Thr 103-Arg 227) was expressed in HEK293 with a C-terminal polyhistidine tag.
<b>Species</b>	Human
<b>Source</b>	HEK293
<b>ProteinLength</b>	103-227 aa
<b>Form</b>	Lyophilized from sterile PBS, pH 7.4.
<b>Bio-activity</b>	Measured by its binding ability in a functional ELISA. Scatchard analysis showed the affinity constant (Kd) of recombinant human VEGF-C bound to recombinant human VEGFR3 was 1.4 nM.
<b>Molecular Mass</b>	The recombinant mature form of human VEGFC consists of 136 amino acids and has a predicted molecular mass of 15.5 kDa. In SDS-PAGE under reducing conditions, it migrates with an apparent molecular mass of 22-24 kDa due to glycosylation.
<b>Endotoxin</b>	< 1.0 EU per µg protein as determined by the LAL method.
<b>Purity</b>	> 97 % as determined by SDS-PAGE
<b>Storage</b>	Store it under sterile conditions at -20°C to -80°C upon receiving. Recommend to aliquot the protein into smaller quantities for optimal storage. Avoid repeated freeze-

 Tel: 1-631-559-9269 1-516-512-3133

 Email: [info@creative-biomart.com](mailto:info@creative-biomart.com)  Fax: 1-631-938-8127

 45-1 Ramsey Road, Shirley, NY 11967, USA

thaw cycles.

**Reconstitution**

It is recommended that sterile water be added to the vial to prepare a stock solution of 0.2 ug/ul. Centrifuge the vial at 4°C before opening to recover the entire contents.

**GENE INFORMATION**

**Gene Name** VEGFC vascular endothelial growth factor C [ Homo sapiens ]

**Official Symbol** VEGFC

**Synonyms** VEGFC; vascular endothelial growth factor C; VRP; VEGF-C; FLT4 ligand DHM; vascular endothelial growth factor-related protein; Flt4-L;

**Gene ID** 7424

**mRNA Refseq** NM\_005429

**Protein Refseq** NP\_005420

**MIM** 601528

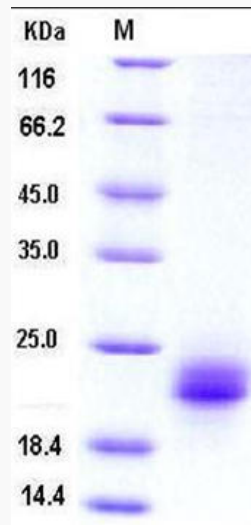
**UniProt ID** P49767

 Tel: 1-631-559-9269 1-516-512-3133

 Email: [info@creative-biomart.com](mailto:info@creative-biomart.com)  Fax: 1-631-938-8127

 45-1 Ramsey Road, Shirley, NY 11967, USA

SDS-PAGE



 Tel: 1-631-559-9269 1-516-512-3133

 Email: [info@creative-biomart.com](mailto:info@creative-biomart.com)  Fax: 1-631-938-8127

 45-1 Ramsey Road, Shirley, NY 11967, USA