

## Recombinant Human VEGFC protein, His-Avi-tagged

Cat. No. VEGFC-4633H Lot. No. (See product label)

### SPECIFICATION

<b>Product Overview</b>	Recombinant Human VEGFC protein(Q6FH59)(Thr103-Arg227), fused with C-terminal His and Avi tag, was expressed in HEK293.
<b>Species</b>	Human
<b>Source</b>	HEK293
<b>ProteinLength</b>	Thr103-Arg227
<b>Tag</b>	C-His-Avi
<b>Form</b>	Lyophilized from 0.22µm filtered solution in 50mM MES, 150mM NaCl (pH 6.0). Normally 8% trehalose is added as protectant before lyophilization.
<b>Bio-activity</b>	Immobilized Human VEGF-C, His Tag at 1µg/ml (100µl/well) on the plate. Dose response curve for Human VEGF R3, hFc Tag with the EC50 of 17.9ng/ml determined by ELISA.
<b>Molecular Mass</b>	The protein has a predicted MW of 17.1 kDa. Due to glycosylation, the protein migrates to 23-30 kDa based on Tris-Bis PAGE result.
<b>Endotoxin</b>	Less than 1EU per µg by the LAL method.
<b>Purity</b>	> 95% as determined by Tris-Bis PAGE; > 95% as determined by HPLC

 Tel: 1-631-559-9269 1-516-512-3133

 Email: [info@creative-biomart.com](mailto:info@creative-biomart.com)  Fax: 1-631-938-8127

 45-1 Ramsey Road, Shirley, NY 11967, USA

**Storage** Reconstituted protein stable at -80°C for 12 months, 4°C for 1 week. Use a manual defrost freezer and avoid repeated freeze-thaw cycles.

**Reconstitution** Centrifuge tubes before opening. Reconstituting to a concentration more than 100 µg/ml is recommended. Dissolve the lyophilized protein in 50mM MES, 150mM NaCl (pH 6.0).

## GENE INFORMATION

**Gene Name** VEGFC vascular endothelial growth factor C [ Homo sapiens ]

**Official Symbol** VEGFC

**Synonyms** VEGFC; vascular endothelial growth factor C; VRP; VEGF-C; FLT4 ligand DHM; vascular endothelial growth factor-related protein; Flt4-L;

**Gene ID** 7424

**mRNA Refseq** NM\_005429

**Protein Refseq** NP\_005420

**MIM** 601528

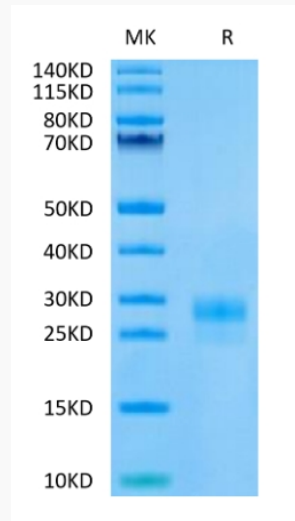
**UniProt ID** P49767

 Tel: 1-631-559-9269 1-516-512-3133

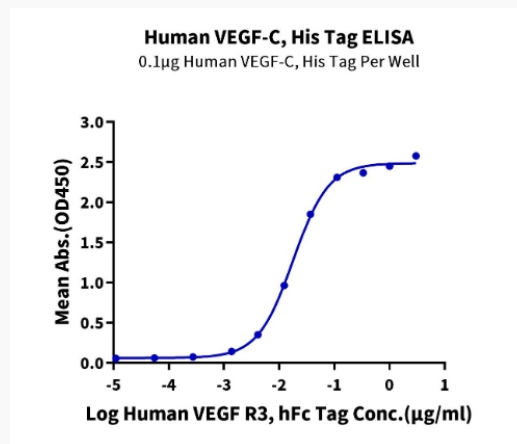
 Email: [info@creative-biomart.com](mailto:info@creative-biomart.com)  Fax: 1-631-938-8127

 45-1 Ramsey Road, Shirley, NY 11967, USA

**Tris-Bis PAGE**



**ELISA Data**



 Tel: 1-631-559-9269 1-516-512-3133

 Email: [info@creative-biomart.com](mailto:info@creative-biomart.com)  Fax: 1-631-938-8127

 45-1 Ramsey Road, Shirley, NY 11967, USA