

Recombinant Human VEGFC protein, His-Avi-tagged, Biotinylated

Cat. No. VEGFC-5632H Lot. No. (See product label)

SPECIFICATION

Product Overview	Biotinylated Recombinant Human VEGFC protein(Q6FH59)(Thr103-Arg227), fused with C-terminal His and Avi tag, was expressed in HEK293.
Species	Human
Source	HEK293
ProteinLength	Thr103-Arg227
Tag	C-His-Avi
Conjugation/Label	Biotin
Form	Supplied as 0.22µm filtered solution in 50mM MES, 150mM NaCl (pH 6.0).
Bio-activity	Immobilized Biotinylated Human VEGF-C, His Tag at 1ug/ml (100ul/well) on the streptavidin precoated plate (5ug/ml). Dose response curve for Human VEGF R3, hFc Tag with the EC50 of 8.2ng/ml determined by ELISA.
Molecular Mass	The protein has a predicted MW of 17.1 kDa. Due to glycosylation, the protein migrates to 23-30 kDa based on Tris-Bis PAGE result.
Endotoxin	Less than 1EU per µg by the LAL method.

 Tel: 1-631-559-9269 1-516-512-3133

 Email: info@creative-biomart.com  Fax: 1-631-938-8127

 45-1 Ramsey Road, Shirley, NY 11967, USA

Purity	> 95% as determined by Tris-Bis PAGE
Storage	Valid for 12 months from date of receipt when stored at -80°C. Recommend to aliquot the protein into smaller quantities for optimal storage. Please do not repeated freeze-thaw cycles.
Reconstitution	It is recommended that sterile water be added to the vial to prepare a stock solution of 0.2 ug/ul. Centrifuge the vial at 4°C before opening to recover the entire contents.
Conjugation	Biotin

GENE INFORMATION

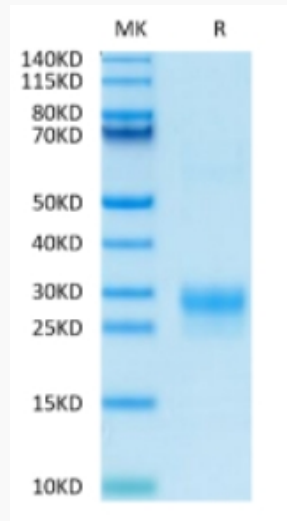
Gene Name	VEGFC vascular endothelial growth factor C [Homo sapiens]
Official Symbol	VEGFC
Synonyms	VEGFC; vascular endothelial growth factor C; VRP; VEGF-C; FLT4 ligand DHM; vascular endothelial growth factor-related protein; Flt4-L;
Gene ID	7424
mRNA Refseq	NM_005429
Protein Refseq	NP_005420
MIM	601528
UniProt ID	P49767

 Tel: 1-631-559-9269 1-516-512-3133

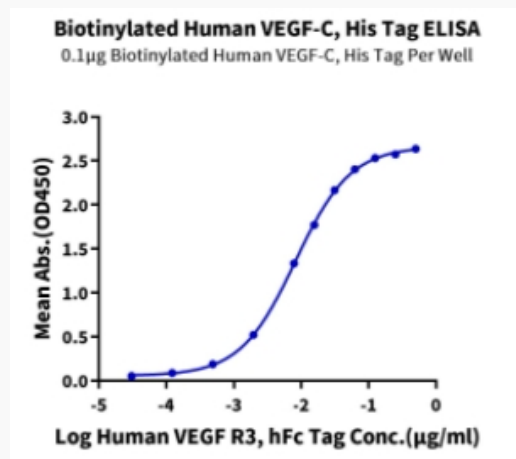
 Email: info@creative-biomart.com  Fax: 1-631-938-8127

 45-1 Ramsey Road, Shirley, NY 11967, USA

Tris-Bis PAGE



ELISA Data



 Tel: 1-631-559-9269 1-516-512-3133

 Email: info@creative-biomart.com  Fax: 1-631-938-8127

 45-1 Ramsey Road, Shirley, NY 11967, USA