

## Recombinant Human VEGFC protein, His-tagged

Cat. No. VEGFC-5743H Lot. No. (See product label)

### SPECIFICATION

<b>Product Overview</b>	Recombinant Human VEGFC protein(P49767)(32-419aa), fused with C-terminal His tag, was expressed in Insect cells.
<b>Species</b>	Human
<b>Source</b>	Insect cells
<b>ProteinLength</b>	32-419aa
<b>Form</b>	If the delivery form is liquid, the default storage buffer is Tris/PBS-based buffer, 5%-50% glycerol. If the delivery form is lyophilized powder, the buffer before lyophilization is Tris/PBS-based buffer, 6% Trehalose, pH 8.0.
<b>Molecular Mass</b>	45.5 kDa
<b>Purity</b>	Greater than 85% as determined by SDS-PAGE.
<b>Storage</b>	Store at -20°C/-80°C upon receipt, aliquoting is necessary for mutiple use. Avoid repeated freeze-thaw cycles.
<b>Reconstitution</b>	We recommend that this vial be briefly centrifuged prior to opening to bring the contents to the bottom. Please reconstitute protein in deionized sterile water to a concentration of 0.1-1.0 mg/mL. We recommend to add 5-50% of glycerol (final concentration) and aliquot for long-term storage at -20°C/-80°C.

 Tel: 1-631-559-9269 1-516-512-3133

 Email: [info@creative-biomart.com](mailto:info@creative-biomart.com)  Fax: 1-631-938-8127

 45-1 Ramsey Road, Shirley, NY 11967, USA

**AA Sequence**

FESGLDLSDAEPDAGEATAYASKDLEEQLRSVSSVDELMTVLYPEYWKMVKCQLRK  
 GGWQHNREQANLNSRTEETIKFAAAHYNTEILKSIDNEWWRKTQCMPREVCIDVGKE  
 FGVATNTFFKPPCVSVYRCGGCCNSEGLQCMNTSTSYLSKTLFEITVPLSQGPKPVT  
 ISFANHTSCRCMSKLDVYRQVHSIIRSLPATLPQCQAANKTCPTNYMWNHICRCL  
 AQEDFMFSSDAGDDSTDGFHDICGPNKELDEETCQCVCRAGLRPASCOPHKELDR  
 NSCQCVCNKLFPSQCGANREFDENTCQCVCCKRTCPRNQPLNPGKCACECTESP  
 QKCLLKGKKFHHQTCSCYRRPCTNRQKACEPGFSYSEEVCRCVPSYWKRPMQMS

## GENE INFORMATION

**Gene Name** [VEGFC vascular endothelial growth factor C \[ Homo sapiens \]](#)

**Official Symbol** [VEGFC](#)

**Synonyms** [VEGFC](#); vascular endothelial growth factor C; VRP; VEGF-C; FLT4 ligand DHM; vascular endothelial growth factor-related protein; Flt4-L;

**Gene ID** [7424](#)

**mRNA Refseq** [NM\\_005429](#)

**Protein Refseq** [NP\\_005420](#)

**MIM** [601528](#)

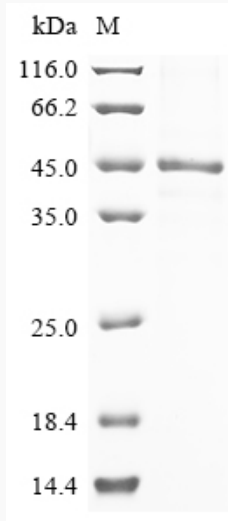
**UniProt ID** [P49767](#)

 Tel: 1-631-559-9269 1-516-512-3133

 Email: [info@creative-biomart.com](mailto:info@creative-biomart.com)  Fax: 1-631-938-8127

 45-1 Ramsey Road, Shirley, NY 11967, USA

**SDS-PAGE**



 Tel: 1-631-559-9269 1-516-512-3133

 Email: [info@creative-biomart.com](mailto:info@creative-biomart.com)  Fax: 1-631-938-8127

 45-1 Ramsey Road, Shirley, NY 11967, USA