

Recombinant Human Von Hippel-Lindau Tumor Suppressor

Cat. No. VHL-232H **Lot. No.** (See product label)

SPECIFICATION

Product Overview Recombinant Human VHL b -domain produced in *E. Coli* is a single, non-glycosylated polypeptide chain. The protein contains 174 amino acids and has a molecular mass of 19.2 kDa.

Species Human

Source E.coli

Description Von Hippel-Lindau disease (VHL) is a dominant inherited syndrome characterized by the predisposition to develop various kinds of benign and malignant tumors, including clear cell renal carcinomas, pheochromocytomas and hemangioblastomas of the central nervous system and retina. VHL syndrome is caused by germline mutation in the VHL tumor suppressor, and VHL tumors are associated with loss or mutation of the remaining wild-type allele. VHL has two domains: a roughly 100-residue NH₂-terminal domain rich in β sheet (b-domain) and a smaller α -helical domain (a-domain), held together by two linkers and a polar interface. VHL protein is also involved in the degradation of hypoxia-inducible factor (HIF).

Amino Acid Sequence MGSSHHHHH SSGLVPRGSH MPRRAENWDE AEVGAEAGV EEYGPEEDGG
EESGAEESGPEESGPEELGA EEEMEAGRPR PVLRSVNSRE PSQVIFCNRS
PRVLPVWLN FDGEPQPYPT LPPGTGRRIH SYRGHLWLFR DAGTHDGLLV
NQTELFVPSL NVDGQPIFAN ITLP.

Physical Appearance Sterile filtered colorless solution.

 Tel: 1-631-559-9269 1-516-512-3133

 Email: info@creative-biomart.com  Fax: 1-631-938-8127

 45-1 Ramsey Road, Shirley, NY 11967, USA

Formulation	The protein (1mg/ml) containing phosphate-buffered Saline (PBS) and 2mM EDTA, pH7.4
Purity	Greater than 95.0% as determined by: (a) Analysis by RP-HPLC. (b) Analysis by reducing and non-reducing SDS-PAGE Coomassie.
Stability	Store at 4°C if entire vial will be used within 2-4 weeks. Store, frozen at -20°C for longer periods of time. Avoid multiple freeze-thaw cycles. For long term storage it is recommended to add a carrier protein (0.1% HSA or BSA).

GENE INFORMATION

Gene Name	VHL von Hippel-Lindau tumor suppressor [Homo sapiens]
Synonyms	VHL; HRCA1; RCA1; VHL1; HRCA1; RCA1; pVHL; Protein G7; VHL von Hippel-Lindau tumor suppressor ; Elongin binding protein; Von Hippel-Lindau syndrome; Von Hippel-Lindau tumor suppressor
Gene ID	7428
mRNA Refseq	NM_000551
Protein Refseq	NP_000542
MIM	608537
UniProt ID	P40337
Chromosome Location	3p26-p25

 Tel: 1-631-559-9269 1-516-512-3133

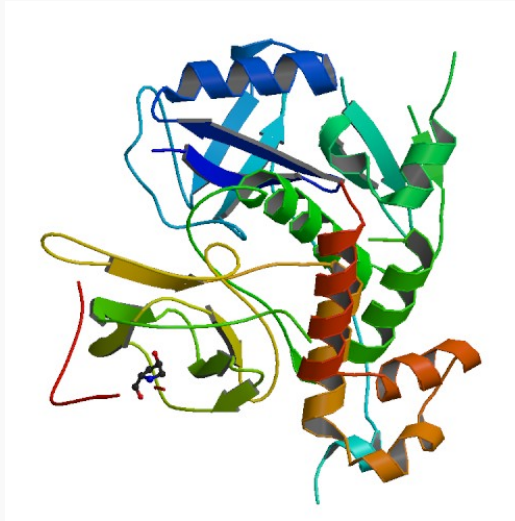
 Email: info@creative-biomart.com  Fax: 1-631-938-8127

 45-1 Ramsey Road, Shirley, NY 11967, USA

Pathway Pathways in cancer; Renal cell carcinoma; Ubiquitin mediated proteolysis

Function Transcription factor binding

**PDB rendering based
on 1lm8**



 Tel: 1-631-559-9269 1-516-512-3133

 Email: info@creative-biomart.com  Fax: 1-631-938-8127

 45-1 Ramsey Road, Shirley, NY 11967, USA