

Active Recombinant Full Length Human VHL Protein, C-Flag-tagged

Cat. No. VHL-259HFL Lot. No. (See product label)

SPECIFICATION

Product Overview	Recombinant Full Length Human VHL Protein, fused to Flag-tag at C-terminus, was expressed in Mammalian cells.
Species	Human
Source	Mammalian Cells
Description	<p>Von Hippel-Lindau syndrome (VHL) is a dominantly inherited familial cancer syndrome predisposing to a variety of malignant and benign tumors. A germline mutation of this gene is the basis of familial inheritance of VHL syndrome. The protein encoded by this gene is a component of the protein complex that includes elongin B, elongin C, and cullin-2, and possesses ubiquitin ligase E3 activity. This protein is involved in the ubiquitination and degradation of hypoxia-inducible-factor (HIF), which is a transcription factor that plays a central role in the regulation of gene expression by oxygen. RNA polymerase II subunit POLR2G/RPB7 is also reported to be a target of this protein. Alternatively spliced transcript variants encoding distinct isoforms have been observed.</p>
Form	25 mM Tris HCl, pH 7.3, 100 mM glycine, 10% glycerol.
Bio-activity	Binding assay
Molecular Mass	24 kDa

 Tel: 1-631-559-9269 1-516-512-3133

 Email: info@creative-biomart.com  Fax: 1-631-938-8127

 45-1 Ramsey Road, Shirley, NY 11967, USA

AA Sequence	MPRRAENWDEAEVGAEEAGVEEYGPPEEDGGEEESGAEESGPEESGPEELGAEEM EAGRPRPVLRSVNSRE PSQVIFCNRSRVLVWLNFDGEPQPYPTLPPGTGRRIH SYRGHLWLF RDAGTHDGLLVNQTELVPSL NVDGQPIFANITLPVYTLKERCLQVVR SLVKPENYRRLDIVRSLYEDLEDHPNVQKDLERLTQERIAHQ MGDTRTRPLEQKLISEEDLAANDILDYKDDDDKV
Purity	> 80% as determined by SDS-PAGE and Coomassie blue staining.
Stability	Stable for 12 months from the date of receipt of the product under proper storage and handling conditions. Avoid repeated freeze-thaw cycles.
Storage	Store at -80 centigrade.
Concentration	>50 ug/mL as determined by microplate BCA method.
Preparation	Recombinant protein was captured through anti-DDK affinity column followed by conventional chromatography steps.
Protein Families	Druggable Genome, Transcription Factors
Protein Pathways	Pathways in cancer, Renal cell carcinoma, Ubiquitin mediated proteolysis
Full Length	Full L.

GENE INFORMATION

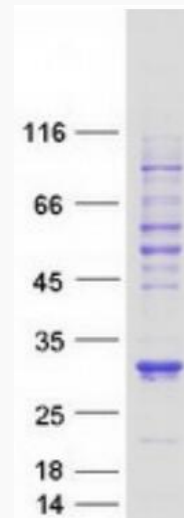
Gene Name	VHL von Hippel-Lindau tumor suppressor [Homo sapiens (human)]
Official Symbol	VHL
Synonyms	RCA1; VHL1; pVHL; HRCA1

 Tel: 1-631-559-9269 1-516-512-3133

 Email: info@creative-biomart.com  Fax: 1-631-938-8127

 45-1 Ramsey Road, Shirley, NY 11967, USA

Gene ID	7428
mRNA Refseq	NM_000551.4
Protein Refseq	NP_000542.1
MIM	608537
UniProt ID	P40337



Coomassie blue staining of purified VHL protein.

Tel: 1-631-559-9269 1-516-512-3133

Email: info@creative-biomart.com Fax: 1-631-938-8127

45-1 Ramsey Road, Shirley, NY 11967, USA