

## Recombinant Human VHL protein, MBP&His-Avi-tagged, Biotinylated

**Cat. No.** VHL-5643H    **Lot. No.** (See product label)

### SPECIFICATION

<b>Product Overview</b>	Biotinylated Recombinant Human VHL protein(P40337)(1-213aa), fused with N-terminal MBP tag and C-terminal His and Avi tag, was expressed in E.coli.
<b>Species</b>	Human
<b>Source</b>	E.coli
<b>ProteinLength</b>	1-213aa
<b>Conjugation/Label</b>	Biotin
<b>Form</b>	If the delivery form is liquid, the default storage buffer is Tris/PBS-based buffer, 5%-50% glycerol. If the delivery form is lyophilized powder, the buffer before lyophilization is Tris/PBS-based buffer, 6% Trehalose, pH 8.0.
<b>Molecular Mass</b>	71.9 kDa
<b>Purity</b>	Greater than 85% as determined by SDS-PAGE.
<b>Storage</b>	Store at -20°C/-80°C upon receipt, aliquoting is necessary for mutiple use. Avoid repeated freeze-thaw cycles.
<b>Reconstitution</b>	We recommend that this vial be briefly centrifuged prior to opening to bring the contents to the bottom. Please reconstitute protein in deionized sterile water to a

 Tel: 1-631-559-9269    1-516-512-3133

 Email: [info@creative-biomart.com](mailto:info@creative-biomart.com)     Fax: 1-631-938-8127

 45-1 Ramsey Road, Shirley, NY 11967, USA

concentration of 0.1-1.0 mg/mL. We recommend to add 5-50% of glycerol (final concentration) and aliquot for long-term storage at -20°C/-80°C.

**AA Sequence**

MPRRAENWDEAEVGAEEAGVEEYGPPEEDGGEEESGAEESGPEESGPEELGAEEM  
 EAGRPRPVLRSVNSREPSQVIFCNRSRVLVLPVWLNFDGEPQPYPTLPPGTGRRIH  
 SYRGHLWLFRDAGTHDGLLVNQTELFVPSLNVGQPIFANITLPVYTLKERCLQVVR  
 SLVKPENYRRLDIVRSLYEDLEDHPNVQKDLERLTQERIAHQRMGD

**Conjugation**                      Biotin

## GENE INFORMATION

**Gene Name**                      [VHL von Hippel-Lindau tumor suppressor, E3 ubiquitin protein ligase \[ Homo sapiens \]](#)

**Official Symbol**                [VHL](#)

**Synonyms**                        VHL; von Hippel-Lindau tumor suppressor, E3 ubiquitin protein ligase; von Hippel Lindau syndrome , von Hippel Lindau tumor suppressor; von Hippel-Lindau disease tumor suppressor; VHL1; protein G7; elongin binding protein; RCA1; pVHL; HRCA1;

**Gene ID**                            [7428](#)

**mRNA Refseq**                   [NM\\_000551](#)

**Protein Refseq**                   [NP\\_000542](#)

**MIM**                                 [608537](#)

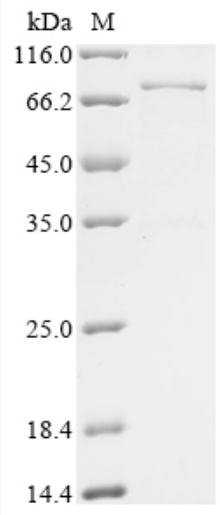
**UniProt ID**                        [P40337](#)

 Tel: 1-631-559-9269    1-516-512-3133

 Email: [info@creative-biomart.com](mailto:info@creative-biomart.com)     Fax: 1-631-938-8127

 45-1 Ramsey Road, Shirley, NY 11967, USA

**SDS-PAGE**



 Tel: 1-631-559-9269 1-516-512-3133

 Email: [info@creative-biomart.com](mailto:info@creative-biomart.com)  Fax: 1-631-938-8127

 45-1 Ramsey Road, Shirley, NY 11967, USA