

Recombinant Human VIT Protein, GST-tagged

Cat. No. VIT-30H **Lot. No.** (See product label)

SPECIFICATION

Product Overview	Recombinant Human VIT(1 a.a. - 203 a.a.) fused with GST tag at N-terminal was expressed in Wheat Germ.
Species	Human
Source	Wheat Germ
Protein Length	1 a.a. - 203 a.a.
Description	This gene encodes an extracellular matrix (ECM) protein. The protein may be associated with cell adhesion and migration. High levels of expression of the protein in specific parts of the brain suggest its likely role in neural development.
Form	50 mM Tris-HCl, 10 mM reduced Glutathione, pH=8.0 in the elution buffer.
Molecular Mass	48.2 kDa
AA Sequence	MRTVVLTMKASVIEMFLVLLVTGVHSNKETAKKIKRPKFTVPQINCDVKAGKIIDPEFI VKCPAGCQDPKYHVYGTDVYASYSSVCGAAVHSGVLDNSGGKILVRKVAGQSGYK GSYSNGVQSLSLPRWRESFIVLESKPKKGVITYPSALTYSSSKSPAAQAGKCSRVIES KPSESMNTRRVLGDSGEINILTGQAPLALAI
Applications	Enzyme-linked Immunoabsorbent; Assay Western Blot (Recombinant protein); Antibody Production; Protein Array

 Tel: 1-631-559-9269 1-516-512-3133

 Email: info@creative-biomart.com  Fax: 1-631-938-8127

 45-1 Ramsey Road, Shirley, NY 11967, USA

Notes Best use within three months from the date of receipt of this protein.

Storage Store at -80 centigrade. Aliquot to avoid repeated freezing and thawing.

GENE INFORMATION

Gene Name VIT vitrin [Homo sapiens]

Official Symbol VIT

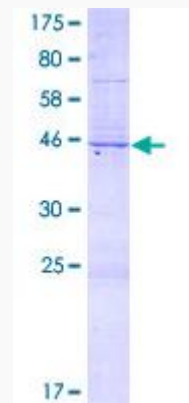
Synonyms VIT; vitrin; MGC70561; MGC149746; DKFZp313L1517;

Gene ID 5212

mRNA Refseq NM_001177969

Protein Refseq NP_001171440

UniProt ID Q6UXI7



 Tel: 1-631-559-9269 1-516-512-3133

 Email: info@creative-biomart.com  Fax: 1-631-938-8127

 45-1 Ramsey Road, Shirley, NY 11967, USA