

## Recombinant Human VMA21 protein, His-tagged

Cat. No. VMA21-3627H Lot. No. (See product label)

### SPECIFICATION

<b>Product Overview</b>	Recombinant Human VMA21 protein(1-101 aa), fused with N-terminal His tag, was expressed in E. coli.
<b>Species</b>	Human
<b>Source</b>	E.coli
<b>ProteinLength</b>	1-101 aa
<b>Form</b>	The purified protein was Lyophilized from sterile PBS (58mM Na <sub>2</sub> HPO <sub>4</sub> , 17mM NaH <sub>2</sub> PO <sub>4</sub> , 68mM NaCl, pH7.4). 5 % trehalose and 5 % mannitol are added as protectant before lyophilization.
<b>Storage</b>	Short-term storage: Store at 2-8°C for (1-2 weeks). Long-term storage: Aliquot and store at -20°C to -80°C for up to 3 months, reconstitution with sterile water and addition of an equal volume of glycerol. Avoid repeat freeze-thaw cycles.
<b>AA Sequence</b>	MERPDKAALNALQPPEFRNESSLASTLKLLFF TALMITVPIGLYFTTKSYIFEGALGM SNRDSYFYAAIVAVVAVHVVLALFVYVAWNEGSRQWREGKQD
<b>Purity</b>	85%, by SDS-PAGE with Coomassie Brilliant Blue staining.

### GENE INFORMATION

**Official Symbol** [VMA21](#)

 Tel: 1-631-559-9269 1-516-512-3133

 Email: [info@creative-biomart.com](mailto:info@creative-biomart.com)  Fax: 1-631-938-8127

 45-1 Ramsey Road, Shirley, NY 11967, USA

**Synonyms** VMA21; VMA21 vacuolar H<sup>+</sup>-ATPase homolog (*S. cerevisiae*); MEAX, myopathy with excessive autophagy; vacuolar ATPase assembly integral membrane protein VMA21; XMEA; myopathy with excessive autophagy protein; MEAX; MGC125514; MGC125516; MGC131652;

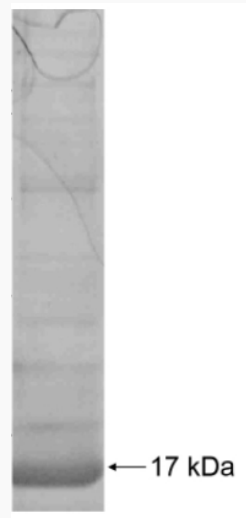
**Gene ID** [203547](#)

**mRNA Refseq** [NM\\_001017980](#)

**Protein Refseq** [NP\\_001017980](#)

**UniProt ID** [Q3ZQA7](#)

**SDS-PAGE**



 Tel: 1-631-559-9269 1-516-512-3133

 Email: [info@creative-biomart.com](mailto:info@creative-biomart.com)  Fax: 1-631-938-8127

 45-1 Ramsey Road, Shirley, NY 11967, USA