

Recombinant Human VMA21 protein, GST-tagged

Cat. No. VMA21-3666H Lot. No. (See product label)

SPECIFICATION

Product Overview	Recombinant Human VMA21 protein(1-101 aa), fused with N-terminal GST tag, was expressed in E. coli.
Species	Human
Source	E.coli
ProteinLength	1-101 aa
Form	The purified protein was Lyophilized from sterile PBS (58mM Na ₂ HPO ₄ , 17mM NaH ₂ PO ₄ , 68mM NaCl, pH7.4). 5 % trehalose and 5 % mannitol are added as protectant before lyophilization.
Storage	Short-term storage: Store at 2-8°C for (1-2 weeks). Long-term storage: Aliquot and store at -20°C to -80°C for up to 3 months, reconstitution with sterile water and addition of an equal volume of glycerol. Avoid repeat freeze-thaw cycles.
AA Sequence	MERPDKAALNALQPPEFRNESSLASTLKTLLFF TALMITVPIGLYFTTKSYIFEGALGM SNRDSYFYAAIVAVVAVHVVLALFVYVAWNEGSRQWREGKQD
Purity	85%, by SDS-PAGE with Coomassie Brilliant Blue staining.

GENE INFORMATION

Official Symbol [VMA21](#)

 Tel: 1-631-559-9269 1-516-512-3133

 Email: info@creative-biomart.com  Fax: 1-631-938-8127

 45-1 Ramsey Road, Shirley, NY 11967, USA

Synonyms VMA21; VMA21 vacuolar H⁺-ATPase homolog (*S. cerevisiae*); MEAX, myopathy with excessive autophagy; vacuolar ATPase assembly integral membrane protein VMA21; XMEA; myopathy with excessive autophagy protein; MEAX; MGC125514; MGC125516; MGC131652;

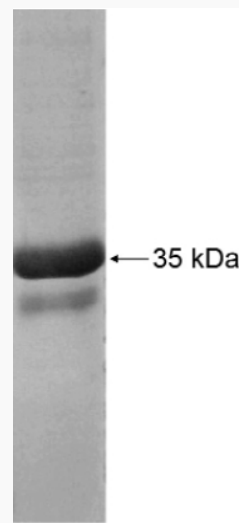
Gene ID 203547

mRNA Refseq NM_001017980

Protein Refseq NP_001017980

UniProt ID Q3ZQA7

SDS-PAGE



 Tel: 1-631-559-9269 1-516-512-3133

 Email: info@creative-biomart.com  Fax: 1-631-938-8127

 45-1 Ramsey Road, Shirley, NY 11967, USA