

Recombinant Human VPREB3 Protein, Myc/DDK-tagged, C13 and N15-labeled

Cat. No. VPREB3-2573H **Lot. No.** (See product label)

SPECIFICATION

Product Overview	VPREB3 MS Standard C13 and N15-labeled recombinant protein (NP_037510) with a C-terminal MYC/DDK tag, was expressed in HEK293 cells.
Species	Human
Source	HEK293
Description	The protein encoded by this gene is the human ortholog of the mouse VpreB3 (8HS20) protein, is thought to be involved in B-cell maturation, and may play a role in assembly of the pre-B cell receptor (pre-BCR). While the role of this protein in B-cell development has not yet been elucidated, studies with the chicken ortholog of this protein have found that when overexpressed, this protein localizes to the endoplasmic reticulum. The mouse ortholog of this protein has been shown to associate with membrane mu heavy chains early in the course of pre-B cell receptor biosynthesis. Expression of this gene has been observed in some lymphomas.
Molecular Mass	13.7 kDa
AA Sequence	MACRCLSFLLMGTFLSVSQTVLAQLDALLVFPGQVAQLSCTLSPQHVTIRDYGVSW YQQRAGSAPRYLLYYRSEEDHHRPADIPDRFSAAKDEAHNACVLTISPVPEDDAD YYCSVGYGFSPTTRTRPLEQKLISEEDLAANDILDYKDDDDKV
Purity	> 80% as determined by SDS-PAGE and Coomassie blue staining

 Tel: 1-631-559-9269 1-516-512-3133

 Email: info@creative-biomart.com  Fax: 1-631-938-8127

 45-1 Ramsey Road, Shirley, NY 11967, USA

Stability	Stable for 3 months from receipt of products under proper storage and handling conditions.
Storage	Store at -80 centigrade. Avoid repeated freeze-thaw cycles.
Concentration	50 µg/mL as determined by BCA
Storage Buffer	100 mM glycine, 25 mM Tris-HCl, pH 7.3.

GENE INFORMATION

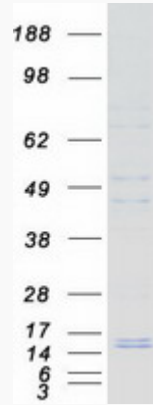
Gene Name	VPREB3 pre-B lymphocyte 3 [Homo sapiens (human)]
Official Symbol	VPREB3
Synonyms	VPREB3; pre-B lymphocyte 3; pre-B lymphocyte protein 3; 8HS20; pre-B lymphocyte gene 3; N27C7-2;
Gene ID	29802
mRNA Refseq	NM_013378
Protein Refseq	NP_037510
MIM	605017
UniProt ID	Q9UKI3

 Tel: 1-631-559-9269 1-516-512-3133

 Email: info@creative-biomart.com  Fax: 1-631-938-8127

 45-1 Ramsey Road, Shirley, NY 11967, USA

SDS-PAGE



 Tel: 1-631-559-9269 1-516-512-3133

 Email: info@creative-biomart.com  Fax: 1-631-938-8127

 45-1 Ramsey Road, Shirley, NY 11967, USA