

Recombinant Human VPS13A Protein (3037-3140 aa), His-SUMO-tagged

Cat. No. VPS13A-1890H **Lot. No.** (See product label)

SPECIFICATION

Product Overview	Recombinant Human VPS13A Protein (3037-3140 aa) is produced by E. coli expression system. This protein is fused with a 6xHis-SUMO tag at the N-terminal. Research Area: Neuroscience. Protein Description: Partial.
Species	Human
Source	E.coli
ProteinLength	3037-3140 aa
Description	May play a role in the control of protein cycling through the trans-Golgi network to early and late endosomes, lysosomes and plasma membrane.
Form	Tris-based buffer,50% glycerol
Molecular Mass	28.5 kDa
AA Sequence	RPPRFFNEDGVIRPYRLRDGTGNQMLQVMENGRFAKYKYFTHVMINKTDMLMITRR GVLVFTKGTFTGQLTCEWQYSFDEFTKEPFIVHGRRLRIEAKERVKSVF
Purity	> 90% as determined by SDS-PAGE.
Notes	Repeated freezing and thawing is not recommended. Store working aliquots at 4 centigrade for up to one week.

 Tel: 1-631-559-9269 1-516-512-3133

 Email: info@creative-biomart.com  Fax: 1-631-938-8127

 45-1 Ramsey Road, Shirley, NY 11967, USA

Storage

The shelf life is related to many factors, storage state, buffer ingredients, storage temperature and the stability of the protein itself. Generally, the shelf life of liquid form is 6 months at -20 centigrade/-80 centigrade. The shelf life of lyophilized form is 12 months at -20 centigrade/-80 centigrade.

Concentration

A hardcopy of COA with reconstitution instruction is sent along with the products.

GENE INFORMATION

Gene Name

VPS13A vacuolar protein sorting 13 homolog A (*S. cerevisiae*) [*Homo sapiens*]

Official Symbol

VPS13A

Synonyms

VPS13A; KIAA0986; CHAC; CHOREIN; FLJ42030;

Gene ID

23230

mRNA Refseq

NM_001018037

Protein Refseq

NP_001018047

MIM

605978

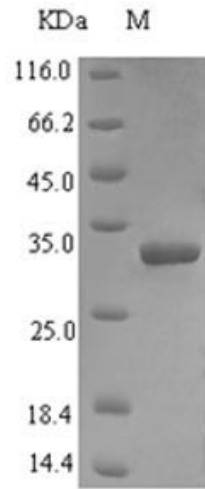
UniProt ID

Q96RL7

 Tel: 1-631-559-9269 1-516-512-3133

 Email: info@creative-biomart.com  Fax: 1-631-938-8127

 45-1 Ramsey Road, Shirley, NY 11967, USA



(Tris-Glycine gel) Discontinuous SDS-PAGE (reduced) with 5% enrichment gel and 15% separation gel.

 Tel: 1-631-559-9269 1-516-512-3133

 Email: info@creative-biomart.com  Fax: 1-631-938-8127

 45-1 Ramsey Road, Shirley, NY 11967, USA