

## Recombinant Human VPS13D protein, His-tagged

Cat. No. VPS13D-743H Lot. No. (See product label)

### SPECIFICATION

<b>Product Overview</b>	Recombinant Human VPS13D protein(Q5THJ4)(3276-3558aa), fused with C-terminal His tag, was expressed in E.coli.
<b>Species</b>	Human
<b>Source</b>	E.coli
<b>ProteinLength</b>	3276-3558a.a.
<b>Tag</b>	His
<b>Form</b>	If the delivery form is liquid, the default storage buffer is Tris/PBS-based buffer, 5%-50% glycerol. If the delivery form is lyophilized powder, the buffer before lyophilization is Tris/PBS-based buffer, 6% Trehalose, pH 8.0.
<b>Molecular Mass</b>	38.9 kDa
<b>Purity</b>	Greater than 90% as determined by SDS-PAGE.
<b>Storage</b>	Store at -20°C/-80°C upon receipt, aliquoting is necessary for mutiple use. Avoid repeated freeze-thaw cycles.
<b>Reconstitution</b>	We recommend that this vial be briefly centrifuged prior to opening to bring the contents to the bottom. Please reconstitute protein in deionized sterile water to a concentration of 0.1-1.0 mg/mL.We recommend to add 5-50% of glycerol (final

 Tel: 1-631-559-9269 1-516-512-3133

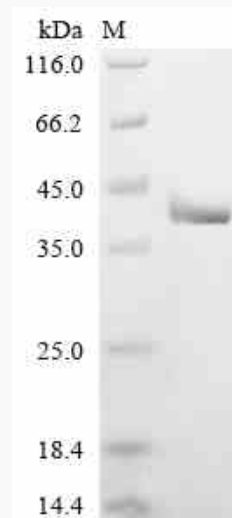
 Email: [info@creative-biomart.com](mailto:info@creative-biomart.com)  Fax: 1-631-938-8127

 45-1 Ramsey Road, Shirley, NY 11967, USA

concentration) and aliquot for long-term storage at -20°C/-80°C.

**AA Sequence**

LKIFISAPYWLINKTGLPLIFRQDNAKTDAAGQFEEHELARSLSPLLFCYADKEQP<sub>N</sub>LC  
TMRIGRGIHPEGM<sub>P</sub>GW<sub>C</sub>QG<sub>F</sub>SLDGGSGV<sub>R</sub>ALKV<sub>I</sub>QQGN<sub>R</sub>PGLI<sub>Y</sub>NIGIDV<sub>K</sub>KGRGR  
YIDTCMVIFAPRYLLDNKSSHKLAF<sub>A</sub>QREFARGQGTANPEGYISTLPGSSVVFHWPR  
NDYDQLLCVRLMDVPNCIWSGGFEV<sub>N</sub>KNNSFHINMRDTL<sub>G</sub>KCF<sub>F</sub>LRVEITL<sub>R</sub>GATYR  
ISFSDTDQLPPPFRIDNFSKVPV<sub>V</sub>FTQH<sub>G</sub>V<sub>A</sub>E<sub>P</sub>RLRTEV<sub>K</sub>PM<sub>T</sub>SLDYAWDEPTL

**SDS-PAGE**

 Tel: 1-631-559-9269 1-516-512-3133

 Email: [info@creative-biomart.com](mailto:info@creative-biomart.com)  Fax: 1-631-938-8127

 45-1 Ramsey Road, Shirley, NY 11967, USA