

Recombinant Human VPS26A Protein, MYC/DDK-tagged, C13 and N15-labeled

Cat. No. VPS26A-200H Lot. No. (See product label)

SPECIFICATION

Product Overview	VPS26A MS Standard C13 and N15-labeled recombinant protein (NP_004887) with a C-terminal MYC/DDK tag, was expressed in HEK293 cells.
Species	Human
Source	HEK293
Description	This gene belongs to a group of vacuolar protein sorting (VPS) genes. The encoded protein is a component of a large multimeric complex, termed the retromer complex, involved in retrograde transport of proteins from endosomes to the trans-Golgi network. The close structural similarity between the yeast and human proteins that make up this complex suggests a similarity in function. Expression studies in yeast and mammalian cells indicate that this protein interacts directly with VPS35, which serves as the core of the retromer complex. Alternative splicing results in multiple transcript variants encoding different isoforms. [provided by RefSeq, Jul 2008]
Molecular Mass	38.2 kDa
AA Sequence	MSFLGGFFGPICEIDIVLNDGETRKMAEMKTEDGKVEKHLYFYDGESVSGKVNLAFLK QPGKRLEHQGIRIEFVVGQIELFNDKSNTHEFVNLVKELALPGELTQSRSYDFEFMQV EKPYESYIGANVRLRYFLKVTIVRRLTDLVKEYDLIVHQLATYPDVNNSIKMEVGIEDC LHIEFEYNKSKYHLKDVIVGKIYFLLVRIKIQHMELQLIKKEITGIGPSTTTTETETIAKYEI MDGAPVKGESIPIRLFLAGYDPTPTMRDVKKFSVRYFLNLVLVDEEDRRYFKQQEII

 Tel: 1-631-559-9269 1-516-512-3133

 Email: info@creative-biomart.com  Fax: 1-631-938-8127

 45-1 Ramsey Road, Shirley, NY 11967, USA

LWRKAPEKLRKQRTNFHQRFESPESQASAEQPEMTRTRPLEQKLISEEDLAANDILD
YKDDDDKV

Purity > 80% as determined by SDS-PAGE and Coomassie blue staining

Stability Stable for 3 months from receipt of products under proper storage and handling conditions.

Storage Store at -80 centigrade. Avoid repeated freeze-thaw cycles.

Concentration 50 µg/mL as determined by BCA

Storage Buffer 100 mM glycine, 25 mM Tris-HCl, pH 7.3.

GENE INFORMATION

Gene Name VPS26A vacuolar protein sorting 26 homolog A (*S. pombe*) [*Homo sapiens* (human)]

Official Symbol VPS26A

Synonyms VPS26A; vacuolar protein sorting 26 homolog A (*S. pombe*); vacuolar protein sorting 26 (yeast homolog), vacuolar protein sorting 26 (yeast), vacuolar protein sorting 26 homolog A (yeast), VPS26; vacuolar protein sorting-associated protein 26A; Hbeta58; PEP8A; vesicle protein sorting 26A; HB58; VPS26; FLJ12930;

Gene ID 9559

mRNA Refseq NM_004896

Protein Refseq NP_004887

 Tel: 1-631-559-9269 1-516-512-3133

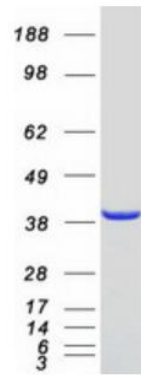
 Email: info@creative-biomart.com  Fax: 1-631-938-8127

 45-1 Ramsey Road, Shirley, NY 11967, USA

MIM 605506

UniProt ID O75436

SDS-PAGE



 Tel: 1-631-559-9269 1-516-512-3133

 Email: info@creative-biomart.com  Fax: 1-631-938-8127

 45-1 Ramsey Road, Shirley, NY 11967, USA