

# Recombinant Full Length Human VPS26A Protein, C-Flag-tagged

**Cat. No.** VPS26A-2190HFL    **Lot. No.** (See product label)

## SPECIFICATION

|                         |  |
|-------------------------|--|
| <b>Product Overview</b> | Recombinant Full Length Human VPS26A Protein, fused to Flag-tag at C-terminus, was expressed in Mammalian cells.   |
| <b>Species</b>          | Human  |
| <b>Source</b>           | Mammalian Cells  |
| <b>Description</b>      | This gene belongs to a group of vacuolar protein sorting (VPS) genes. The encoded protein is a component of a large multimeric complex, termed the retromer complex, involved in retrograde transport of proteins from endosomes to the trans-Golgi network. The close structural similarity between the yeast and human proteins that make up this complex suggests a similarity in function. Expression studies in yeast and mammalian cells indicate that this protein interacts directly with VPS35, which serves as the core of the retromer complex. Alternative splicing results in multiple transcript variants encoding different isoforms. |
| <b>Form</b>             | 25 mM Tris HCl, pH 7.3, 100 mM glycine, 10% glycerol.  |
| <b>Molecular Mass</b>   | 38 kDa   |
| <b>AA Sequence</b>      | MSFLGGFFGPICEIDIVLNDGETRKMAEMKTEDGKVEKHLYFYDGESVSGKVNLAFLK<br>QPGKRLEHQGIRI EFVVGQIELFNDKSNTHFVNLVKELALPGELTQSRSYDFEFMQV<br>EKPYESYIGANVRLRYFLKVTIVRRL TDLVKEYDLIVHQLATYPDVNNSIKMEVGIEDC<br>LHIEFEYNKSKYHLKDVIVGKIYFLLVRIKIQHMELQ LIKKEITGIGPSTTTETETIAKYEI  |

 Tel: 1-631-559-9269    1-516-512-3133

 Email: [info@creative-biomart.com](mailto:info@creative-biomart.com)     Fax: 1-631-938-8127

 45-1 Ramsey Road, Shirley, NY 11967, USA

MDGAPVKGESIPIRLFLAGYDPTPTMRDVNKKFSVRYFLNLVLVD EEDRRYFKQQEI  
 ILWRKAPEKLRKQRTNFHQRFESPESQASAEQPEM TRTRPLEQKLISEEDLAANDIL  
 DYKDDDDKV

**Purity** > 80% as determined by SDS-PAGE and Coomassie blue staining.

**Stability** Stable for 12 months from the date of receipt of the product under proper storage and handling conditions. Avoid repeated freeze-thaw cycles.

**Storage** Store at -80 centigrade.

**Concentration** >50 ug/mL as determined by microplate BCA method.

**Preparation** Recombinant protein was captured through anti-DDK affinity column followed by conventional chromatography steps.

**Full Length** Full L.

## GENE INFORMATION

**Gene Name** [VPS26A VPS26 retromer complex component A \[ Homo sapiens \(human\) \]](#)

**Official Symbol** [VPS26A](#)

**Synonyms** HB58; PEP8A; VPS26; Hbeta58

**Gene ID** [9559](#)

**mRNA Refseq** [NM\\_004896.5](#)

**Protein Refseq** [NP\\_004887.2](#)

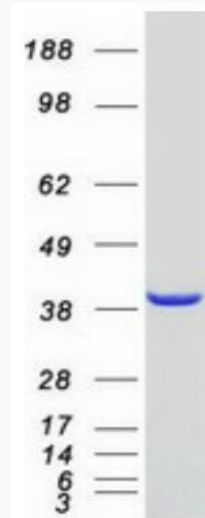
 Tel: 1-631-559-9269 1-516-512-3133

 Email: [info@creative-biomart.com](mailto:info@creative-biomart.com)  Fax: 1-631-938-8127

 45-1 Ramsey Road, Shirley, NY 11967, USA

MIM 605506

UniProt ID O75436



Coomassie blue staining of purified VPS26A protein.

Tel: 1-631-559-9269 1-516-512-3133

Email: [info@creative-biomart.com](mailto:info@creative-biomart.com) Fax: 1-631-938-8127

45-1 Ramsey Road, Shirley, NY 11967, USA