

## Recombinant Human VPS28 Protein, Myc/DDK-tagged, C13 and N15-labeled

**Cat. No.** VPS28-4066H    **Lot. No.** (See product label)

### SPECIFICATION

<b>Product Overview</b>	VPS28 MS Standard C13 and N15-labeled recombinant protein (NP_898880) with a C-terminal MYC/DDK tag, was expressed in HEK293 cells.
<b>Species</b>	Human
<b>Source</b>	HEK293
<b>Description</b>	This gene encodes a protein subunit of the ESCRT-I complex (endosomal complexes required for transport), which functions in the transport and sorting of proteins into subcellular vesicles. This complex can also be hijacked to facilitate the budding of enveloped viruses from the cell membrane. Alternative splicing results in multiple transcript variants encoding different isoforms.
<b>Molecular Mass</b>	26.5 kDa
<b>AA Sequence</b>	MFHGIPATPGIGAPGNKPELYEEVKLYKNAREREKYDNMAELFAVVKTMQALEKAYI KDCVSPSEYTAACSRLLVQYKAAFRQVQGSEISSIDFCRKFRLDCPLAMERIKEDR PITIKDDKGNLNRCIADVVSFLFITVMDKLRLEIRAMDEIQPDLRELMETMHRMSHLPPD FEGRQTVSQWWVSLPARQSPAVPETLPARRSPAVPLRPSAPTCPVLHSQAADPER HVGVRTRTRPLEQKLISEEDLAANDILDYKDDDDKV
<b>Purity</b>	> 80% as determined by SDS-PAGE and Coomassie blue staining
<b>Stability</b>	Stable for 3 months from receipt of products under proper storage and handling

 Tel: 1-631-559-9269    1-516-512-3133

 Email: [info@creative-biomart.com](mailto:info@creative-biomart.com)     Fax: 1-631-938-8127

 45-1 Ramsey Road, Shirley, NY 11967, USA

conditions.

**Storage** Store at -80 centigrade. Avoid repeated freeze-thaw cycles.

**Concentration** 50 µg/mL as determined by BCA

**Storage Buffer** 100 mM glycine, 25 mM Tris-HCl, pH 7.3.

## GENE INFORMATION

**Gene Name** VPS28 VPS28 subunit of ESCRT-I [ Homo sapiens (human) ]

**Official Symbol** VPS28

**Synonyms** VPS28; vacuolar protein sorting 28 homolog (S. cerevisiae); vacuolar protein sorting 28 (yeast); vacuolar protein sorting-associated protein 28 homolog; H-Vps28; ESCRT-I complex subunit VPS28; yeast class E protein Vps28p homolog; MGC60323;

**Gene ID** 51160

**mRNA Refseq** NM\_183057

**Protein Refseq** NP\_898880

**MIM** 611952

**UniProt ID** Q9UK41

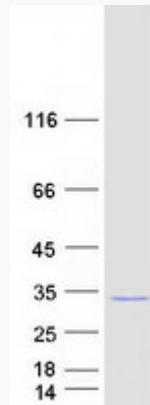
 Tel: 1-631-559-9269 1-516-512-3133

 Email: [info@creative-biomart.com](mailto:info@creative-biomart.com)  Fax: 1-631-938-8127

 45-1 Ramsey Road, Shirley, NY 11967, USA



SDS-PAGE



Tel: 1-631-559-9269 1-516-512-3133

Email: [info@creative-biomart.com](mailto:info@creative-biomart.com) Fax: 1-631-938-8127

45-1 Ramsey Road, Shirley, NY 11967, USA