

Recombinant Human VPS28 Protein, Myc/DDK-tagged, C13 and N15-labeled

Cat. No. VPS28-6367H **Lot. No.** (See product label)

SPECIFICATION

Product Overview	VPS28 MS Standard C13 and N15-labeled recombinant protein (NP_057292) with a C-terminal MYC/DDK tag, was expressed in HEK293 cells.
Species	Human
Source	HEK293
Description	This gene encodes a protein subunit of the ESCRT-I complex (endosomal complexes required for transport), which functions in the transport and sorting of proteins into subcellular vesicles. This complex can also be hijacked to facilitate the budding of enveloped viruses from the cell membrane. Alternative splicing results in multiple transcript variants encoding different isoforms.
Molecular Mass	25.4 kDa
AA Sequence	MFHGIPATPGIGAPGNKPELYEEVKLYKNAREREKYDNMAELFAVVKTMQALEKAYI KDCVSPSEYTAACSRLLVQYKAAFRQVQGSEISSIDFCRKFRLDCPLAMERIKEDR PITIKDDKGNLNRCIADVVSFLFITVMDKLRLEIRAMDEIQPDLRELMETMHRMSHLPD FEGRQTVSQWLQTLSGMSASDELDDSQVRQMLFDLESAYNAFNRFHATRTRPLE QKLISEEDLAANDILDYKDDDDKV
Purity	> 80% as determined by SDS-PAGE and Coomassie blue staining
Stability	Stable for 3 months from receipt of products under proper storage and handling

 Tel: 1-631-559-9269 1-516-512-3133

 Email: info@creative-biomart.com  Fax: 1-631-938-8127

 45-1 Ramsey Road, Shirley, NY 11967, USA

conditions.

Storage Store at -80 centigrade. Avoid repeated freeze-thaw cycles.

Concentration 50 µg/mL as determined by BCA

Storage Buffer 100 mM glycine, 25 mM Tris-HCl, pH 7.3.

GENE INFORMATION

Gene Name VPS28 VPS28 subunit of ESCRT-I [Homo sapiens (human)]

Official Symbol VPS28

Synonyms VPS28; vacuolar protein sorting 28 homolog (S. cerevisiae); vacuolar protein sorting 28 (yeast); vacuolar protein sorting-associated protein 28 homolog; H-Vps28; ESCRT-I complex subunit VPS28; yeast class E protein Vps28p homolog; MGC60323;

Gene ID 51160

mRNA Refseq NM_016208

Protein Refseq NP_057292

MIM 611952

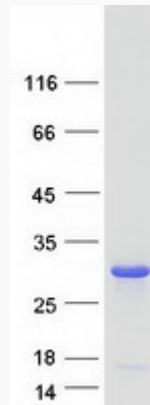
UniProt ID Q9UK41

 Tel: 1-631-559-9269 1-516-512-3133

 Email: info@creative-biomart.com  Fax: 1-631-938-8127

 45-1 Ramsey Road, Shirley, NY 11967, USA

SDS-PAGE



 Tel: 1-631-559-9269 1-516-512-3133

 Email: info@creative-biomart.com  Fax: 1-631-938-8127

 45-1 Ramsey Road, Shirley, NY 11967, USA