

Recombinant Human VPS35 Protein (1-796 aa), His-MBP-tagged

Cat. No. VPS35-2750M **Lot. No.** (See product label)

SPECIFICATION

Product Overview	Recombinant Human VPS35 Protein (1-796 aa) is produced by Baculovirus expression system. This protein is fused with a MBP tag at the N-terminal and a 6xHis tag at the C-terminal. Research Area: Signal Transduction. Protein Description: Full Length.
Species	Human
Source	Insect Cells
ProteinLength	1-796 aa
Description	Acts as component of the retromer cargo-selective complex (CSC). The CSC is believed to be the core functional component of retromer or respective retromer complex variants acting to prevent missorting of selected transmembrane cargo proteins into the lysosomal degradation pathway. The recruitment of the CSC to the endosomal membrane involves RAB7A and SNX3. The CSC seems to associate with the cytoplasmic domain of cargo proteins predominantly via VPS35; however, these interactions seem to be of low affinity and retromer SNX proteins may also contribute to cargo selectivity thus questioning the classical function of the CSC. The SNX-BAR retromer mediates retrograde transport of cargo proteins from endosomes to the trans-Golgi network (TGN) and is involved in endosome-to-plasma membrane transport for cargo protein recycling. The SNX3-retromer mediates the retrograde endosome-to-TGN transport of WLS distinct from the SNX-BAR retromer pathway.

 Tel: 1-631-559-9269 1-516-512-3133

 Email: info@creative-biomart.com  Fax: 1-631-938-8127

 45-1 Ramsey Road, Shirley, NY 11967, USA

The SNX27-retromer is believed to be involved in endosome-to-plasma membrane trafficking and recycling of a broad spectrum of cargo proteins. The CSC seems to act as recruitment hub for other proteins, such as the WASH complex and TBC1D5 (Probable). Required for retrograde transport of lysosomal enzyme receptor IGF2R and SLC11A2. Required to regulate transcytosis of the polymeric immunoglobulin receptor (pIgR-pIgA). Required for endosomal localization of WASHC2C. Mediates the association of the CSC with the WASH complex via WASHC2. Required for the endosomal localization of TBC1D5.

Form Tris-based buffer,50% glycerol

Molecular Mass 135.7 kDa

AA Sequence

MPTTQQSPQDEQEKLLEDAIQAVKVQSFQMKRCLDKNKLMDALKHASNMLGELRT
 SMLSPKSYELYMAISDELHYLEVYLTDEFKGRKQVADLYELVQYAGNIIPRLYLLITV
 GVVYVKSFPQSRKDILKDLVEMCRGVQHPLRGLFLRNYLLQCTRNILPDEGEPTDEE
 TTGDISDSMDFVLLNFAEMNKLWVRMQHQGHSRDREKRERERQELRILVGTNLVRL
 SQLEGVNVERYKQIVLTGILEQVVNCRDALAQEYLMECIIQVFPDEFHLQTLNPFLLRA
 CAELHQNVNVKNIIIALIDRLALFAHREDGPGIPADIKLFDIFSQQVATVIQSRQDMPSE
 DVVSLQVSLINLAMKCYPRVDYVDKVLETTVEIFNKLNLEHIATSSAVSKELTRLLKI
 PVDTYNNILTVLKLKHFHPLFEYFDYESRKSMSCYVLSNVLDYNTTEIVSQDQVDSIMN
 LVSTLIQDQPDQPVDPDPEDFADEQSLVGRFIHLLRSEDPDQYLLINTARKHFGA
 GGNQRIRFTLPLVFAAYQLAFRYKENSKVDDKWEKKCQKIFSFAHQTISALIKAELA
 ELPLRFLQGALAAGEIGFENHETVAYEFMSQAFSLYEDEISDSKAQLAAITLIIGTFER
 MKCFSEENHEPLRTQCALAASKLLKKPDQGRAVSTCAHLFWSGRNTDKNGEELHG
 GKRVMCECLKKALKIANQCMDPSLQVQLFIEILNRYIYFYEKENDAVTIQVLNQLIQKIR
 EDLPNLESSEETE QINKHFHNTLEHLRLRRESPESSEGLI

Purity > 85% as determined by SDS-PAGE.

 Tel: 1-631-559-9269 1-516-512-3133

 Email: info@creative-biomart.com  Fax: 1-631-938-8127

 45-1 Ramsey Road, Shirley, NY 11967, USA

Notes	Repeated freezing and thawing is not recommended. Store working aliquots at 4 centigrade for up to one week.
Storage	The shelf life is related to many factors, storage state, buffer ingredients, storage temperature and the stability of the protein itself. Generally, the shelf life of liquid form is 6 months at -20 centigrade/-80 centigrade. The shelf life of lyophilized form is 12 months at -20 centigrade/-80 centigrade.
Concentration	A hardcopy of COA will be sent along with the products. Please refer to it for detailed information.

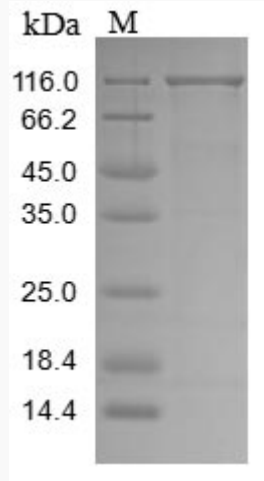
GENE INFORMATION

Gene Name	VPS35 vacuolar protein sorting 35 homolog (<i>S. cerevisiae</i>) [<i>Homo sapiens</i>]
Official Symbol	VPS35
Synonyms	VPS35; FLJ10752; MEM3; hVPS35; maternal-embryonic 3; PARK17; FLJ13588; FLJ20388; DKFZp434E1211; DKFZp434P1672;
Gene ID	55737
mRNA Refseq	NM_018206
Protein Refseq	NP_060676
MIM	601501
UniProt ID	Q96QK1


 Tel: 1-631-559-9269 1-516-512-3133

 Email: info@creative-biomart.com  Fax: 1-631-938-8127

 45-1 Ramsey Road, Shirley, NY 11967, USA



(Tris-Glycine gel) Discontinuous SDS-PAGE (reduced) with 5% enrichment gel and 15% separation gel.

 Tel: 1-631-559-9269 1-516-512-3133

 Email: info@creative-biomart.com  Fax: 1-631-938-8127

 45-1 Ramsey Road, Shirley, NY 11967, USA