

## Recombinant Human VSIG2 Protein, His-tagged

Cat. No. VSIG2-3911H Lot. No. (See product label)

### SPECIFICATION

<b>Product Overview</b>	Recombinant Human VSIG2 protein(Val24-Ala243), fused with C-terminal His tag, was expressed in HEK293.
<b>Species</b>	Human
<b>Source</b>	HEK293
<b>ProteinLength</b>	Val24-Ala243
<b>Tag</b>	C-His
<b>Form</b>	Liquid in sterile PBS, pH7.4.
<b>Molecular Mass</b>	The protein has a calculated MW of 25 kDa.
<b>Endotoxin</b>	<1.0EU per 1µg (determined by the LAL method).
<b>Purity</b>	> 90 % as determined by SDS-PAGE.
<b>Storage</b>	Store it under sterile conditions at -80°C. It is recommended that the protein be aliquoted for optimal storage. Avoid repeated freeze-thaw cycles.
<b>Concentration</b>	1.0 mg/ml. Centrifuge the vial at 4°C before opening to recover the entire contents.
<b>Reconstitution</b>	It is recommended that sterile water be added to the vial to prepare a stock solution of

 Tel: 1-631-559-9269 1-516-512-3133

 Email: [info@creative-biomart.com](mailto:info@creative-biomart.com)  Fax: 1-631-938-8127

 45-1 Ramsey Road, Shirley, NY 11967, USA

0.2 ug/ul. Centrifuge the vial at 4°C before opening to recover the entire contents.

**AA Sequence**

VEVKVPTEPLSTPLGKTAELTCTYSTSVGDSFALEWSFVQPGKPISESHPILYFTNGH  
 LYPTGSKSKRVSLQNPPTVGVATLKLTDVHPSDTGTLYLCQVNNPPDFYTNGGLIN  
 LTVLVPPSNPLCSQSGQTSVGGSTALRCSSSEGAPKPVYNWVRLGTFPTSPGSM  
 VQDEVSGQLILTNLSTSSGTYRCVATNQMGASCELTLVTEPSQGRVAAHHHHH  
 HHHHH

## GENE INFORMATION

**Gene Name** VSIG2 V-set and immunoglobulin domain containing 2 [ Homo sapiens ]

**Official Symbol** VSIG2

**Synonyms** VSIG2; V-set and immunoglobulin domain containing 2; V-set and immunoglobulin domain-containing protein 2; CTH; CTXL; CT-like protein; cortical thymocyte-like protein; cortical thymocyte receptor (X. laevis CTX) like; 2210413P10Rik;

**Gene ID** 23584

**mRNA Refseq** NM\_014312

**Protein Refseq** NP\_055127

**MIM** 606011

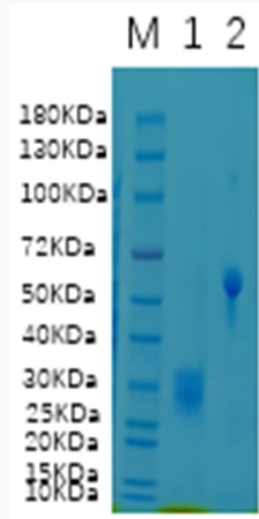
**UniProt ID** Q96IQ7

 Tel: 1-631-559-9269 1-516-512-3133

 Email: [info@creative-biomart.com](mailto:info@creative-biomart.com)  Fax: 1-631-938-8127

 45-1 Ramsey Road, Shirley, NY 11967, USA

SDS-PAGE



Lane 1: VSIG2-3911H; Lane 2: BSA

 Tel: 1-631-559-9269 1-516-512-3133

 Email: [info@creative-biomart.com](mailto:info@creative-biomart.com)  Fax: 1-631-938-8127

 45-1 Ramsey Road, Shirley, NY 11967, USA