

Recombinant Human VSIG2 Protein, Myc/DDK-tagged, C13 and N15-labeled

Cat. No. VSIG2-3939H **Lot. No.** (See product label)

SPECIFICATION

Product Overview	VSIG2 MS Standard C13 and N15-labeled recombinant protein (NP_055127) with a C-terminal MYC/DDK tag, was expressed in HEK293 cells.
Species	Human
Source	HEK293
Description	VSIG2 (V-Set And Immunoglobulin Domain Containing 2) is a Protein Coding gene. An important paralog of this gene is ESAM.
Molecular Mass	34.3 kDa
AA Sequence	<p>MAELPGPFLLCGALLGFLCGLSLAVEVKVPTEPLSTPLGKTAELTCTYSTSVGDSFALE WSFVQPGKPISESHPILYFTNGHLYPTGSKSKRVSLQNPPTVGVATLKLTDVHPSD TGTLYLCQVNNPPDFYTNGLGLINLTVLVPPSNPLCSQSGQTSVGGSTALRCSSEG APKPVYNWVRLGTFPTSPGSMVQDEVSGQLILTNLSTSSGTYRCVATNQMGAS CELTSLVTEPSQGRVAGALIGVLLGVLLLSVAAFCLVRFQKERGKKPKETYGGSDLR EDIAPGISEHTCMRADSSKGFLERPSSASTVTTTTSKSLPMVVTRTRPLEQKLISEED LAANDILDYKDDDDKV</p>
Purity	> 80% as determined by SDS-PAGE and Coomassie blue staining
Stability	Stable for 3 months from receipt of products under proper storage and handling conditions.

 Tel: 1-631-559-9269 1-516-512-3133

 Email: info@creative-biomart.com  Fax: 1-631-938-8127

 45-1 Ramsey Road, Shirley, NY 11967, USA

Storage	Store at -80 centigrade. Avoid repeated freeze-thaw cycles.
Concentration	50 µg/mL as determined by BCA
Storage Buffer	100 mM glycine, 25 mM Tris-HCl, pH 7.3.

GENE INFORMATION

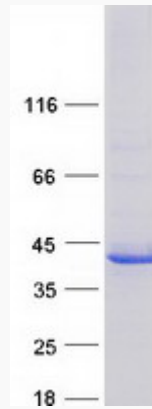
Gene Name	VSIG2 V-set and immunoglobulin domain containing 2 [Homo sapiens (human)]
Official Symbol	VSIG2
Synonyms	VSIG2; V-set and immunoglobulin domain containing 2; V-set and immunoglobulin domain-containing protein 2; CTH; CTXL; CT-like protein; cortical thymocyte-like protein; cortical thymocyte receptor (X. laevis CTX) like; 2210413P10Rik;
Gene ID	23584
mRNA Refseq	NM_014312
Protein Refseq	NP_055127
MIM	606011
UniProt ID	Q96IQ7

 Tel: 1-631-559-9269 1-516-512-3133

 Email: info@creative-biomart.com  Fax: 1-631-938-8127

 45-1 Ramsey Road, Shirley, NY 11967, USA

SDS-PAGE



 Tel: 1-631-559-9269 1-516-512-3133

 Email: info@creative-biomart.com  Fax: 1-631-938-8127

 45-1 Ramsey Road, Shirley, NY 11967, USA