

Recombinant Human VSNL1 Protein, Myc/DDK-tagged, C13 and N15-labeled

Cat. No. VSNL1-1279H Lot. No. (See product label)

SPECIFICATION

Product Overview	VSNL1 MS Standard C13 and N15-labeled recombinant protein (NP_003376) with a C-terminal MYC/DDK tag, was expressed in HEK293 cells.
Species	Human
Source	HEK293
Description	This gene is a member of the visinin/recoverin subfamily of neuronal calcium sensor proteins. The encoded protein is strongly expressed in granule cells of the cerebellum where it associates with membranes in a calcium-dependent manner and modulates intracellular signaling pathways of the central nervous system by directly or indirectly regulating the activity of adenylyl cyclase. Alternatively spliced transcript variants have been observed, but their full-length nature has not been determined.
Molecular Mass	22.1 kDa
AA Sequence	MGKQNSKLAPEVMEDLVKSTEFNEHELKQWYKGFLKDCPSGRLNLEEFQQLYVKF FPYGDASKFAQHAFRTFDKNGDGTIDFREFICALSITSRGSFEQKLNWAFNMYDLDG DGKITRVEMLEIIEAIYKMGVTVIMMKMNEDGLTPEQRVDFKIFSKMDKNKDDQITLDE FKEAAKSDPSIVLLLQCDIQKTRTRPLEQKLISEEDLAANDILDYKDDDDKV
Purity	> 80% as determined by SDS-PAGE and Coomassie blue staining
Stability	Stable for 3 months from receipt of products under proper storage and handling

 Tel: 1-631-559-9269 1-516-512-3133

 Email: info@creative-biomart.com  Fax: 1-631-938-8127

 45-1 Ramsey Road, Shirley, NY 11967, USA

conditions.

Storage Store at -80 centigrade. Avoid repeated freeze-thaw cycles.

Concentration 50 µg/mL as determined by BCA

Storage Buffer 100 mM glycine, 25 mM Tris-HCl, pH 7.3.

GENE INFORMATION

Gene Name VSNL1 visinin-like 1 [Homo sapiens (human)]

Official Symbol VSNL1

Synonyms VSNL1; visinin-like 1; visinin-like protein 1; hippocalcin like protein 3; HLP3; HPCAL3; HUVISL1; VILIP; VILIP 1; VLP-1; hippocalcin-like protein 3; VILIP-1;

Gene ID 7447

mRNA Refseq NM_003385

Protein Refseq NP_003376

MIM 600817

UniProt ID P62760

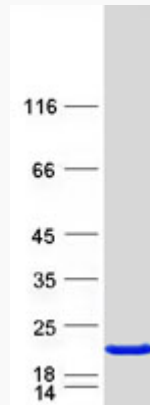
 Tel: 1-631-559-9269 1-516-512-3133

 Email: info@creative-biomart.com  Fax: 1-631-938-8127

 45-1 Ramsey Road, Shirley, NY 11967, USA



SDS-PAGE



Tel: 1-631-559-9269 1-516-512-3133

Email: info@creative-biomart.com Fax: 1-631-938-8127

45-1 Ramsey Road, Shirley, NY 11967, USA