

Recombinant Full Length Human VSTM2A Protein, C-Flag-tagged

Cat. No. VSTM2A-1435HFL **Lot. No.** (See product label)

SPECIFICATION

Product Overview	Recombinant Full Length Human VSTM2A Protein, fused to Flag-tag at C-terminus, was expressed in Mammalian cells.
Species	Human
Source	Mammalian Cells
Description	Predicted to enable identical protein binding activity. Involved in several processes, including positive regulation of brown fat cell differentiation; positive regulation of lipid storage; and positive regulation of white fat cell proliferation. Predicted to be located in extracellular region. Predicted to be integral component of membrane.
Form	25 mM Tris HCl, pH 7.3, 100 mM glycine, 10% glycerol.
Molecular Mass	25.7 kDa
AA Sequence	MGIFLVYVGVFFSVLYVQQGLSSQAKFTEFPRNVTATEGQNVEMSCAFQSGSASV YLEIQWWFLRGPED LDPGAEGAGA QVKLLPDRDPDSGDKISTVKVQGN DISHKLQ ISKVRKKDEGLYECRVTDANYGELQE HK AQAYLKV NANS HARRMQAFEASPMWLQ DMKPRKNVSA AIPSSIHGSANQRTHSTSSPQVVAKIPKQSPQS GMETHFEPFILPLTNAPQKGQSYRVDRFMNGDFTRTRPLEQKLISEEDLAANDILDY KDDDDKV
Purity	> 80% as determined by SDS-PAGE and Coomassie blue staining.

 Tel: 1-631-559-9269 1-516-512-3133

 Email: info@creative-biomart.com  Fax: 1-631-938-8127

 45-1 Ramsey Road, Shirley, NY 11967, USA



Stability	Stable for 12 months from the date of receipt of the product under proper storage and handling conditions. Avoid repeated freeze-thaw cycles.
Storage	Store at -80 centigrade.
Concentration	>50 ug/mL as determined by microplate BCA method.
Preparation	Recombinant protein was captured through anti-DDK affinity column followed by conventional chromatography steps.
Protein Families	Secreted Protein, Transmembrane
Full Length	Full L.

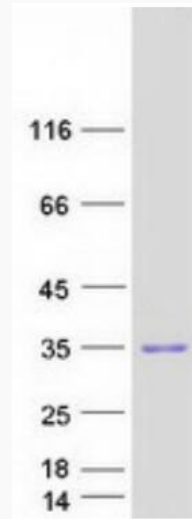
GENE INFORMATION

Gene Name	VSTM2A V-set and transmembrane domain containing 2A [Homo sapiens (human)]
Official Symbol	VSTM2A
Synonyms	VSTM2
Gene ID	222008
mRNA Refseq	NM_182546.4
Protein Refseq	NP_872352.2
UniProt ID	Q8TAG5

Tel: 1-631-559-9269 1-516-512-3133

Email: info@creative-biomart.com Fax: 1-631-938-8127

45-1 Ramsey Road, Shirley, NY 11967, USA



Coomassie blue staining of purified VSTM2A protein.

 Tel: 1-631-559-9269 1-516-512-3133

 Email: info@creative-biomart.com  Fax: 1-631-938-8127

 45-1 Ramsey Road, Shirley, NY 11967, USA