

Recombinant Human VSX2 Protein, GST-tagged

Cat. No. VSX2-1353H Lot. No. (See product label)

SPECIFICATION

Product Overview Human CHX10 full-length ORF (NP_878314.1, 1 a.a. - 361 a.a.) recombinant protein with GST-tag at N-terminal.

Species Human

Source Wheat Germ

Description This gene encodes a homeobox protein originally described as a retina-specific transcription factor. Mutations in this gene are associated with microphthalmia, cataracts and iris abnormalities. [provided by RefSeq, Oct 2009]

Molecular Mass 65.8 kDa

AA Sequence
MTGKAGEALSKPKSETVAKSTSGGAPARCTGFGIQEILGLNKEPPSSHPRAALDGLA
PGHLLAARSVLSPAGVGGMGLLPGGLPGFYTQPTFLEVLSDPQSVHLQPLGRASG
PLDTSQTASSDSEDVSSDRKMSKSALNQTKKRKKRRHRTIFTSYQLEELEKAFNEA
HYPDVYAREMLAMKTELPEMRIQVWFQNRRAKWRKREKCWGRSSVMAEYGLYGA
MVRHSIPLPESILKSAKDGIMDSCAPWLLGMHKKSLAAAESGRKPEGERQALPKLD
KMEQDERGPDAQAASQEELRENSIAVLRKAQEHSTKVLGTVSGPDLSLARSTKPE
EEEEAMDEDRPAERLSPPQLEDMA

Applications
Enzyme-linked Immunoabsorbent Assay
Western Blot (Recombinant protein)
Antibody Production
Protein Array

 Tel: 1-631-559-9269 1-516-512-3133

 Email: info@creative-biomart.com  Fax: 1-631-938-8127

 45-1 Ramsey Road, Shirley, NY 11967, USA

Notes	Best use within three months from the date of receipt of this protein.
Storage	Store at -80 centigrade. Aliquot to avoid repeated freezing and thawing.
Storage Buffer	50 mM Tris-HCl, 10 mM reduced Glutathione, pH=8.0 in the elution buffer.
GENE INFORMATION	
Gene Name	VSX2 visual system homeobox 2 [Homo sapiens]
Official Symbol	VSX2
Synonyms	VSX2; visual system homeobox 2; C elegans ceh 10 homeo domain containing homolog , ceh 10 homeo domain containing homolog (C. elegans) , ceh 10 homeodomain containing homolog (C. elegans) , CHX10, HOX10; RET1; homeobox protein CHX10; ceh-10 homeodomain-containing homolog; ceh-10 homeo domain containing homolog; CHX10; HOX10; MCOP2; MCOPCB3;
Gene ID	338917
mRNA Refseq	NM_182894
Protein Refseq	NP_878314
MIM	142993
UniProt ID	P58304

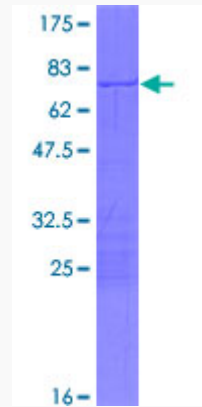
 Tel: 1-631-559-9269 1-516-512-3133

 Email: info@creative-biomart.com  Fax: 1-631-938-8127

 45-1 Ramsey Road, Shirley, NY 11967, USA

Quality Control

Testing:



12.5% SDS-PAGE Stained with Coomassie Blue.

 Tel: 1-631-559-9269 1-516-512-3133

 Email: info@creative-biomart.com  Fax: 1-631-938-8127

 45-1 Ramsey Road, Shirley, NY 11967, USA