

Recombinant Human VSX2 Protein, Myc/DDK-tagged, C13 and N15-labeled

Cat. No. VSX2-1529H **Lot. No.** (See product label)

SPECIFICATION

Product Overview	VSX2 MS Standard C13 and N15-labeled recombinant protein (NP_878314) with a C-terminal MYC/DDK tag, was expressed in HEK293 cells.
Species	Human
Source	HEK293
Description	This gene encodes a homeobox protein originally described as a retina-specific transcription factor. Mutations in this gene are associated with microphthalmia, cataracts and iris abnormalities.
Molecular Mass	39.2 kDa
AA Sequence	<p>MTGKAGEALSKPKSETVAKSTSGGAPARCTGFGIQEILGLNKEPPSSHPRAALDGLA PGHLLAARSVLSPAGVGGMGLLPGGLPGFYTQPTFLEVLSDPQSVHLQPLGRASG PLDTSQTASSDSEDVSSDRKMSKSALNQTKKRKKRRHRTIFTSYQLEELEKAFNEA HYPDVYAREMLAMKTELPEDRIQVWFQNRRAKWRKREKCWGRSSVMAEYGLYGA MVRHSIPLPESILKSAKDGMDSAPWLLGMHKKSLAAAESGRKPEGERQALPKLD KMEQDERGPDAQAASQEELRENSIAVLRKAQEHSTKVLGTVSGPDSLARSTKPK EEEEAMDEDRPAERLSPPQLEDMATRTRPLEQKLISEEDLAANDILDYKDDDDKV</p>
Purity	> 80% as determined by SDS-PAGE and Coomassie blue staining
Stability	Stable for 3 months from receipt of products under proper storage and handling

 Tel: 1-631-559-9269 1-516-512-3133

 Email: info@creative-biomart.com  Fax: 1-631-938-8127

 45-1 Ramsey Road, Shirley, NY 11967, USA

conditions.

Storage Store at -80 centigrade. Avoid repeated freeze-thaw cycles.

Concentration 50 µg/mL as determined by BCA

Storage Buffer 100 mM glycine, 25 mM Tris-HCl, pH 7.3.

GENE INFORMATION

Gene Name [VSX2 visual system homeobox 2 \[Homo sapiens \(human\) \]](#)

Official Symbol [VSX2](#)

Synonyms VSX2; visual system homeobox 2; C elegans ceh 10 homeo domain containing homolog, ceh 10 homeo domain containing homolog (C. elegans), ceh 10 homeodomain containing homolog (C. elegans), CHX10, HOX10; RET1; homeobox protein CHX10; ceh-10 homeodomain-containing homolog; ceh-10 homeo domain containing homolog; CHX10; HOX10; MCOP2; MCOPCB3;

Gene ID [338917](#)

mRNA Refseq [NM_182894](#)

Protein Refseq [NP_878314](#)

MIM [142993](#)

UniProt ID [P58304](#)

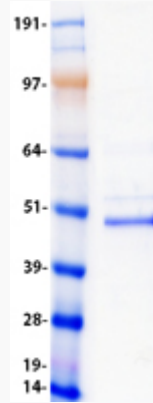
 Tel: 1-631-559-9269 1-516-512-3133

 Email: info@creative-biomart.com  Fax: 1-631-938-8127

 45-1 Ramsey Road, Shirley, NY 11967, USA



SDS-PAGE



Tel: 1-631-559-9269 1-516-512-3133

Email: info@creative-biomart.com Fax: 1-631-938-8127

45-1 Ramsey Road, Shirley, NY 11967, USA