

## Recombinant Human VTCN1 Protein (Met1-Ala24, Phe29-Ala258), C-His tagged

Cat. No. VTCN1-6595H Lot. No. (See product label)

### SPECIFICATION

<b>Product Overview</b>	Recombinant human VTCN1 (Met1-Ala24, Phe29-Ala258) fused with the C-terminal His tag was expressed in mammalian cells.
<b>Species</b>	Human
<b>Source</b>	Mammalian Cells
<b>ProteinLength</b>	Met1-Ala24, Phe29-Ala258
<b>Form</b>	Lyophilized powder/frozen liquid
<b>Molecular Mass</b>	28.73 kDa
<b>Purity</b>	> 90 % as determined by SDS-PAGE
<b>Notes</b>	For research use only.
<b>Storage</b>	Use a manual defrost freezer and avoid repeated freeze thaw cycles. Store at 2 to 8 centigrade for one week. Store at -20 to -80 centigrade for twelve months from the date of receipt.
<b>Storage Buffer</b>	Supplied as solution form in 50 mM Tris-HCl, pH 8.0, 150 mM NaCl or lyophilized from 50 mM Tris-HCl, pH 8.0, 150 mM NaCl.

 Tel: 1-631-559-9269 1-516-512-3133

 Email: [info@creative-biomart.com](mailto:info@creative-biomart.com)  Fax: 1-631-938-8127

 45-1 Ramsey Road, Shirley, NY 11967, USA

**Reconstitution** Reconstitute in sterile water for a stock solution.

**Shipping** They are shipped out with dry ice/blue ice unless customers require otherwise.

## GENE INFORMATION

**Gene Name** [VTCN1 V-set domain containing T cell activation inhibitor 1 \[ Homo sapiens \(human\) \]](#)

**Official Symbol** [VTCN1](#)

**Synonyms** VTCN1; V-set domain containing T cell activation inhibitor 1; V-set domain-containing T-cell activation inhibitor 1; B7 family member; H4; B7 superfamily member 1; B7 H4; B7H4; B7S1; B7X; FLJ22418; B7 family member, H4; T cell costimulatory molecule B7x; T-cell costimulatory molecule B7x; immune costimulatory protein B7-H4; B7-H4; B7h.5; VCTN1; PRO1291; RP11-229A19.4;

**Gene ID** [79679](#)

**mRNA Refseq** [NM\\_001253849](#)

**Protein Refseq** [NP\\_001240778](#)

**MIM** [608162](#)

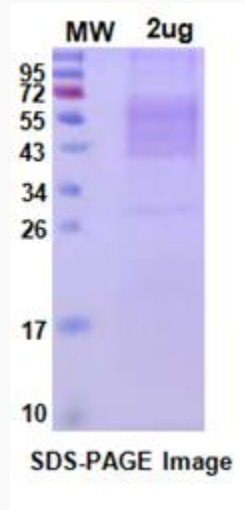
**UniProt ID** [Q7Z7D3](#)

 Tel: 1-631-559-9269 1-516-512-3133

 Email: [info@creative-biomart.com](mailto:info@creative-biomart.com)  Fax: 1-631-938-8127

 45-1 Ramsey Road, Shirley, NY 11967, USA

SDS-PAGE



 Tel: 1-631-559-9269 1-516-512-3133

 Email: [info@creative-biomart.com](mailto:info@creative-biomart.com)  Fax: 1-631-938-8127

 45-1 Ramsey Road, Shirley, NY 11967, USA