

Recombinant Human VTCN1 protein, hFc-tagged

Cat. No. VTCN1-7298H Lot. No. (See product label)

SPECIFICATION

Product Overview	Recombinant Human VTCN1 protein(Q7Z7D3-1)(Phe29-Ala258), fused with C-terminal hFc tag, was expressed in HEK293.
Species	Human
Source	HEK293
ProteinLength	Phe29-Ala258
Tag	C-hFc
Form	Lyophilized from 0.22µm filtered solution in PBS (pH 7.4). Normally 5% trehalose is added as protectant before lyophilization.
Bio-activity	Immobilized Human B7-H4, hFc Tag at 0.5µg/ml (100µl/Well) on the plate. Dose response curve for Biotinylated Anti-B7-H4 Antibody, hFc Tag with the EC50 of 7.8ng/ml determined by ELISA.
Molecular Mass	The protein has a predicted MW of 52.1 kDa. Due to glycosylation, the protein migrates to 70-80 kDa based on Tris-Bis PAGE result.
Endotoxin	Less than 1EU per µg by the LAL method.
Purity	> 95% as determined by Tris-Bis PAGE; > 95% as determined by HPLC

 Tel: 1-631-559-9269 1-516-512-3133

 Email: info@creative-biomart.com  Fax: 1-631-938-8127

 45-1 Ramsey Road, Shirley, NY 11967, USA

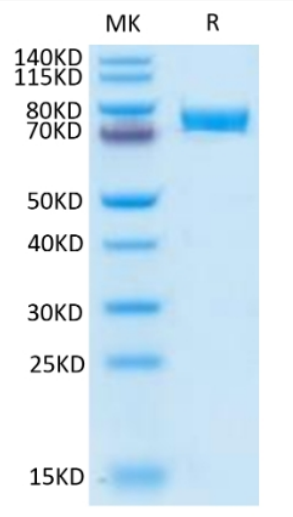
Storage	Reconstituted protein stable at -80°C for 12 months, 4°C for 1 week. Use a manual defrost freezer and avoid repeated freeze-thaw cycles.
Reconstitution	Centrifuge tubes before opening. Reconstituting to a concentration more than 100 µg/ml is recommended. Dissolve the lyophilized protein in distilled water.
GENE INFORMATION	
Gene Name	VTCN1 V-set domain containing T cell activation inhibitor 1 [Homo sapiens]
Official Symbol	VTCN1
Synonyms	VTCN1; V-set domain containing T cell activation inhibitor 1; V-set domain-containing T-cell activation inhibitor 1; B7 family member; H4; B7 superfamily member 1; B7 H4; B7H4; B7S1; B7X; FLJ22418; B7 family member, H4; T cell costimulatory molecule B7x; T-cell costimulatory molecule B7x; immune costimulatory protein B7-H4; B7-H4; B7h.5; VCTN1; PRO1291; RP11-229A19.4;
Gene ID	79679
mRNA Refseq	NM_001253849
Protein Refseq	NP_001240778
MIM	608162
UniProt ID	Q7Z7D3

 Tel: 1-631-559-9269 1-516-512-3133

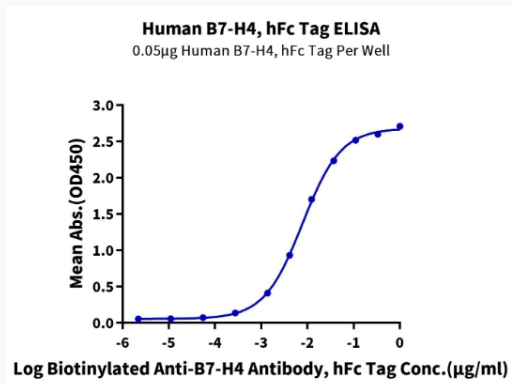
 Email: info@creative-biomart.com  Fax: 1-631-938-8127

 45-1 Ramsey Road, Shirley, NY 11967, USA

Tris-Bis PAGE



ELISA Data



Tel: 1-631-559-9269 1-516-512-3133

Email: info@creative-biomart.com Fax: 1-631-938-8127

45-1 Ramsey Road, Shirley, NY 11967, USA