

Recombinant Human VT1A protein, His-tagged

Cat. No. VT1A-7843H **Lot. No.** (See product label)

SPECIFICATION

Product Overview	Recombinant Human VT1A protein(1-203 aa), fused with N-terminal His tag, was expressed in E. coli.
Species	Human
Source	E.coli
ProteinLength	1-203 aa
Form	The purified protein was Lyophilized from sterile PBS (58mM Na ₂ HPO ₄ , 17mM NaH ₂ PO ₄ , 68mM NaCl, pH7.4). 5 % trehalose and 5 % mannitol are added as protectant before lyophilization.
Storage	Short-term storage: Store at 2-8°C for (1-2 weeks). Long-term storage: Aliquot and store at -20°C to -80°C for up to 3 months, reconstitution with sterile water and addition of an equal volume of glycerol. Avoid repeat freeze-thaw cycles.
AA Sequence	MSSDFEGYEQDFAVLTAEITSKIARVPRLPPDEKKQMVANVEKQLEEKELLEQMDL EVREIPPQSRGMYSNRMRSYKQEMGKLETDFKRSRIAYSDEVNELLGDDGNSSE NQRAHLLDNTERLERSRRLEAGYQIAVETEIQIQEMLENLSHDREKIQRARERLRE TDANLGKSSRILTGMLRRGCSVKKQCNLAPKA
Purity	85%, by SDS-PAGE with Coomassie Brilliant Blue staining.

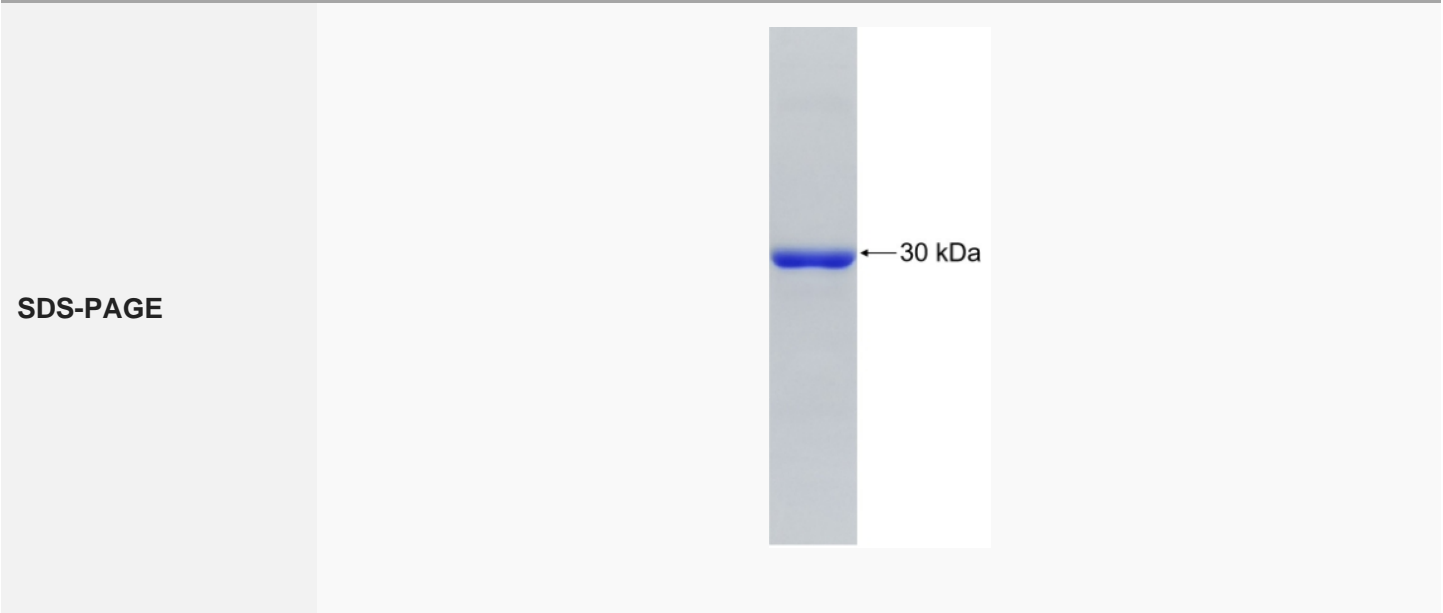
GENE INFORMATION

 Tel: 1-631-559-9269 1-516-512-3133

 Email: info@creative-biomart.com  Fax: 1-631-938-8127

 45-1 Ramsey Road, Shirley, NY 11967, USA

Official Symbol	VTI1A
Synonyms	VTI1A; vesicle transport through interaction with t-SNAREs homolog 1A (yeast); vesicle transport through interaction with t-SNAREs homolog 1A; MVti1; Vti1 rp2; Vti1a; SNARE Vti1a-beta protein; vesicle transport v-SNARE protein Vti1-like 2; VTI1RP2; Vti1-rp2;
Gene ID	143187
mRNA Refseq	NM_145206
Protein Refseq	NP_660207
MIM	614316
UniProt ID	Q96AJ9



 Tel: 1-631-559-9269 1-516-512-3133

 Email: info@creative-biomart.com  Fax: 1-631-938-8127

 45-1 Ramsey Road, Shirley, NY 11967, USA