

# Recombinant Human VTI1B Protein, Myc/DDK-tagged, C13 and N15-labeled

**Cat. No.** VTI1B-5135H    **Lot. No.** (See product label)

## SPECIFICATION

<b>Product Overview</b>	VTI1B MS Standard C13 and N15-labeled recombinant protein (NP_006361) with a C-terminal MYC/DDK tag, was expressed in HEK293 cells.
<b>Species</b>	Human
<b>Source</b>	HEK293
<b>Description</b>	V-SNARE that mediates vesicle transport pathways through interactions with t-SNAREs on the target membrane. These interactions are proposed to mediate aspects of the specificity of vesicle trafficking and to promote fusion of the lipid bilayers. May be concerned with increased secretion of cytokines associated with cellular senescence.
<b>Molecular Mass</b>	26.7 kDa
<b>AA Sequence</b>	MASSAASSEHFEKLHEIFRGLHEDLQGVPERLLGTAGTEEKKKLIRDFDEKQQEANE TLAEMEEELRYAPLSFRNPMMSKLRNYRKDLAKLHREVRSTPLTATPGGRGDMKY GIYAVENEHMNRLQSQRAMLLQGTESLNRATQSIERSHRIATETDQIGSEIIIEELGEG RDQLERTKSRLVNTSENLSKSRKILRSMSRKVTTNKLLLSIIILLELAILGGLVYYKFFR SHTRTRPLEQKLISEEDLAANDILDYKDDDDKV
<b>Purity</b>	> 80% as determined by SDS-PAGE and Coomassie blue staining
<b>Stability</b>	Stable for 3 months from receipt of products under proper storage and handling

 Tel: 1-631-559-9269    1-516-512-3133

 Email: [info@creative-biomart.com](mailto:info@creative-biomart.com)     Fax: 1-631-938-8127

 45-1 Ramsey Road, Shirley, NY 11967, USA

conditions.

**Storage** Store at -80 centigrade. Avoid repeated freeze-thaw cycles.

**Concentration** 50 µg/mL as determined by BCA

**Storage Buffer** 100 mM glycine, 25 mM Tris-HCl, pH 7.3.

## GENE INFORMATION

**Gene Name** [VTI1B vesicle transport through interaction with t-SNAREs 1B \[ Homo sapiens \(human\) \]](#)

**Official Symbol** [VTI1B](#)

**Synonyms** VTI1B; vesicle transport through interaction with t-SNAREs homolog 1B (yeast); vesicle transport through interaction with t-SNAREs homolog 1B; VT12; vesicle transport v-SNARE protein Vti1-like 1; vesicle-associated soluble NSF attachment protein receptor; VTI1; VTI1L; v-SNARE; vti1-rp1; VTI1-LIKE;

**Gene ID** [10490](#)

**mRNA Refseq** [NM\\_006370](#)

**Protein Refseq** [NP\\_006361](#)

**MIM** [603207](#)

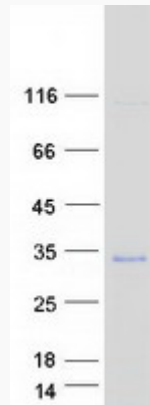
**UniProt ID** [Q9UEU0](#)

 Tel: 1-631-559-9269 1-516-512-3133

 Email: [info@creative-biomart.com](mailto:info@creative-biomart.com)  Fax: 1-631-938-8127

 45-1 Ramsey Road, Shirley, NY 11967, USA

**SDS-PAGE**



 Tel: 1-631-559-9269 1-516-512-3133

 Email: [info@creative-biomart.com](mailto:info@creative-biomart.com)  Fax: 1-631-938-8127

 45-1 Ramsey Road, Shirley, NY 11967, USA