

Recombinant Human VWA1 Protein, Myc/DDK-tagged, C13 and N15-labeled

Cat. No. VWA1-1904H **Lot. No.** (See product label)

SPECIFICATION

Product Overview	VWA1 MS Standard C13 and N15-labeled recombinant protein (NP_073745) with a C-terminal MYC/DDK tag, was expressed in HEK293 cells.
Species	Human
Source	HEK293
Description	VWA1 belongs to the von Willebrand factor (VWF) A (VWFA) domain superfamily of extracellular matrix proteins and appears to play a role in cartilage structure and function.
Molecular Mass	46.8 kDa
AA Sequence	MLPWTALGLALSLRLALARSGAERGPPASAPRGDLMFLLDSSASVSHYEF SRVREF VGQLVAPLPLGTGALRASLVHVGSRPYTEFPFGQHSSGEEAQAQDAVRASAQRMGDT HTGLALVYAKEQLFAEASGARPGVPKVLVWVTDGGSSDPVGPMPQELKDLGVTVFI VSTGRGNFLELSAAASAPAEKHLHFVDVDDLHIIVQELRGSILDAMRPQQLHATEITS SGFRLAWPPLLTADSGYYVLELVPSAQPGAARRQQPLGNATDWIWAGLDPDPTDYD VALVPESNVRLLRPQILRVTRPGEAGPGASGPESGAGPAPTQLAALPAPEEAGPE RIVISHARPRSLRVSWAPALGSAAALGYHVQFGPLRGGEAQRVEVPAGRNCTTLQG LAPGTAYLVTVTAAFRSGRESALSAKACTPDGPRPRPRPVPRAPTPGTASREPTRT RPLEQKLISEEDLAANDILDYKDDDDKV
Purity	> 80% as determined by SDS-PAGE and Coomassie blue staining

 Tel: 1-631-559-9269 1-516-512-3133

 Email: info@creative-biomart.com  Fax: 1-631-938-8127

 45-1 Ramsey Road, Shirley, NY 11967, USA

Stability	Stable for 3 months from receipt of products under proper storage and handling conditions.
Storage	Store at -80 centigrade. Avoid repeated freeze-thaw cycles.
Concentration	50 µg/mL as determined by BCA
Storage Buffer	100 mM glycine, 25 mM Tris-HCl, pH 7.3.

GENE INFORMATION

Gene Name	VWA1 von Willebrand factor A domain containing 1 [Homo sapiens (human)]
Official Symbol	VWA1
Synonyms	VWA1; von Willebrand factor A domain containing 1; WARP; von Willebrand factor A domain-containing protein 1; von Willebrand factor A domain-related protein
Gene ID	64856
mRNA Refseq	NM_022834
Protein Refseq	NP_073745
MIM	611901
UniProt ID	Q6PCB0

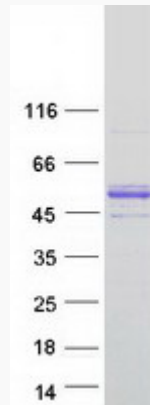
 Tel: 1-631-559-9269 1-516-512-3133

 Email: info@creative-biomart.com  Fax: 1-631-938-8127

 45-1 Ramsey Road, Shirley, NY 11967, USA



SDS-PAGE



Tel: 1-631-559-9269 1-516-512-3133

Email: info@creative-biomart.com Fax: 1-631-938-8127

45-1 Ramsey Road, Shirley, NY 11967, USA