

Recombinant Human VWC2L Protein, Myc/DDK-tagged, C13 and N15-labeled

Cat. No. VWC2L-1527H **Lot. No.** (See product label)

SPECIFICATION

Product Overview	VWC2L MS Standard C13 and N15-labeled recombinant protein (NP_001073969) with a C-terminal MYC/DDK tag, was expressed in HEK293 cells.
Species	Human
Source	HEK293
Description	VWC2L (Von Willebrand Factor C Domain Containing 2 Like) is a Protein Coding gene. Diseases associated with VWC2L include Spinocerebellar Ataxia 36 and Mental Retardation, Enteropathy, Deafness, Peripheral Neuropathy, Ichthyosis, And Keratoderma. An important paralog of this gene is VWC2.
Molecular Mass	24.4 kDa
AA Sequence	MALHIHEACILLLVIPGLVTSAAISHEDYPADEGDQISSNDNLIFDDYRGKGCVDDSGF VYKLGERRFFPGHSNCPCVCALDGPVCDQPECPKIHPKCTKVEHNGCCPECKEYKVN FCEYHGKNYKILEEFKPSPEWCRCEPSNEVHCVVADCAVPECVNPNVYEPEQCCP VCKNGPNCFAGTTIIPAGIEVKVDECNICHCHNGDWWKPAQCSKRECQGKQTVTRT RPLEQKLISEEDLAANDILDYKDDDDKV
Purity	> 80% as determined by SDS-PAGE and Coomassie blue staining
Stability	Stable for 3 months from receipt of products under proper storage and handling conditions.

 Tel: 1-631-559-9269 1-516-512-3133

 Email: info@creative-biomart.com  Fax: 1-631-938-8127

 45-1 Ramsey Road, Shirley, NY 11967, USA

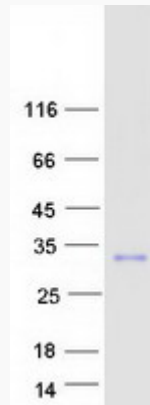
Storage	Store at -80 centigrade. Avoid repeated freeze-thaw cycles.
Concentration	50 µg/mL as determined by BCA
Storage Buffer	100 mM glycine, 25 mM Tris-HCl, pH 7.3.
GENE INFORMATION	
Gene Name	VWC2L von Willebrand factor C domain containing 2 like [Homo sapiens (human)]
Official Symbol	VWC2L
Synonyms	VWC2L; von Willebrand factor C domain containing 2 like; von Willebrand factor C domain-containing protein 2-like; brorin-like; von Willebrand factor C domain containing protein 2 like
Gene ID	402117
mRNA Refseq	NM_001080500
Protein Refseq	NP_001073969
UniProt ID	B2RUY7

 Tel: 1-631-559-9269 1-516-512-3133

 Email: info@creative-biomart.com  Fax: 1-631-938-8127

 45-1 Ramsey Road, Shirley, NY 11967, USA

SDS-PAGE



 Tel: 1-631-559-9269 1-516-512-3133

 Email: info@creative-biomart.com  Fax: 1-631-938-8127

 45-1 Ramsey Road, Shirley, NY 11967, USA