

Recombinant Full Length Human VWC2L Protein, C-Flag-tagged

Cat. No. VWC2L-1837HFL **Lot. No.** (See product label)

SPECIFICATION

Product Overview	Recombinant Full Length Human VWC2L Protein, fused to Flag-tag at C-terminus, was expressed in Mammalian cells.
Species	Human
Source	Mammalian Cells
Description	Predicted to be involved in negative regulation of BMP signaling pathway. Predicted to act upstream of or within positive regulation of neuron differentiation. Predicted to be located in extracellular region and synapse. Predicted to be part of AMPA glutamate receptor complex. Predicted to be active in extracellular space.
Form	25 mM Tris HCl, pH 7.3, 100 mM glycine, 10% glycerol.
Molecular Mass	24.4 kDa
AA Sequence	MALHIHEACILLLVIPGLVTSAAISHEDYPADEGDQISSNDNLIFDDYRGKGCVDDSGF VYKLGERRFFPG HSNCPVCALDGPVCDQPECPKIHPKCTKVEHNGCCPECKEVKN FCEYHGKNYKILEEFKPSPEWCRCE PSNEVHCVVADCAVPECVNPVYEPEQCCP VCKNGPNCFAGTTIIPAGIEVKVDECNICHCHNGDWWKPAQ CSKRECQGKQTV TR TRPLEQKLISEEDLAANDILDYKDDDDKV
Purity	> 80% as determined by SDS-PAGE and Coomassie blue staining.

 Tel: 1-631-559-9269 1-516-512-3133

 Email: info@creative-biomart.com  Fax: 1-631-938-8127

 45-1 Ramsey Road, Shirley, NY 11967, USA

Stability	Stable for 12 months from the date of receipt of the product under proper storage and handling conditions. Avoid repeated freeze-thaw cycles.
Storage	Store at -80 centigrade.
Concentration	>50 ug/mL as determined by microplate BCA method.
Preparation	Recombinant protein was captured through anti-DDK affinity column followed by conventional chromatography steps.
Full Length	Full L.

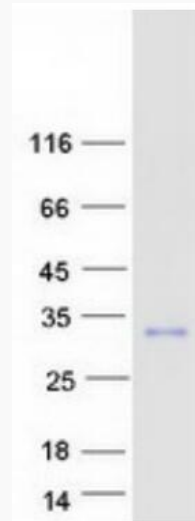
GENE INFORMATION

Gene Name	VWC2L von Willebrand factor C domain containing 2 like [Homo sapiens (human)]
Official Symbol	VWC2L
Gene ID	402117
mRNA Refseq	NM_001080500.4
Protein Refseq	NP_001073969.1
MIM	619794
UniProt ID	B2RUY7

 Tel: 1-631-559-9269 1-516-512-3133

 Email: info@creative-biomart.com  Fax: 1-631-938-8127

 45-1 Ramsey Road, Shirley, NY 11967, USA



Coomassie blue staining of purified VWC2L protein.

 Tel: 1-631-559-9269 1-516-512-3133

 Email: info@creative-biomart.com  Fax: 1-631-938-8127

 45-1 Ramsey Road, Shirley, NY 11967, USA