

Recombinant Zebrafish VWC2L Protein (22-223 aa), His-Myc-tagged

Cat. No. VWC2L-2465Z Lot. No. (See product label)

SPECIFICATION

Product Overview	Recombinant Zebrafish (<i>Danio rerio</i>) (<i>Brachydanio rerio</i>) VWC2L Protein (22-223 aa) is produced by Yeast expression system. This protein is fused with a 6xHis tag at the C-terminal and a Myc tag at the C-terminal. Protein Description: Full Length of Mature Protein.
Species	Zebrafish
Source	Yeast
ProteinLength	22-223 aa
Description	May play a role in bone differentiation and matrix mineralization. May play a role in neural development.
Form	Tris-based buffer, 50% glycerol
Molecular Mass	25.4 kDa
AA Sequence	ASVGPEDYPAADEAERTANNDIIFDDYRGKGCVDDSGFVYKLGGERFFPGHSNCPCV CTEDGPVCDQPECPKIHPKCTKVEHNGCCPECKEVKNFCEYRGKTYKILEEFKPS CEWCRCEPNNEVHCVVADCAVPECVNPVYEPEQCCPICKNGPNCFAGTTIIPAGIEV KVDDCTICRCHSGDWWKPAQCLRRECLNGQATS
Purity	> 90% as determined by SDS-PAGE.

 Tel: 1-631-559-9269 1-516-512-3133

 Email: info@creative-biomart.com  Fax: 1-631-938-8127

 45-1 Ramsey Road, Shirley, NY 11967, USA

Notes	Repeated freezing and thawing is not recommended. Store working aliquots at 4 centigrade for up to one week.
Storage	The shelf life is related to many factors, storage state, buffer ingredients, storage temperature and the stability of the protein itself. Generally, the shelf life of liquid form is 6 months at -20 centigrade/-80 centigrade. The shelf life of lyophilized form is 12 months at -20 centigrade/-80 centigrade.
Concentration	A hardcopy of COA will be sent along with the products. Please refer to it for detailed information.

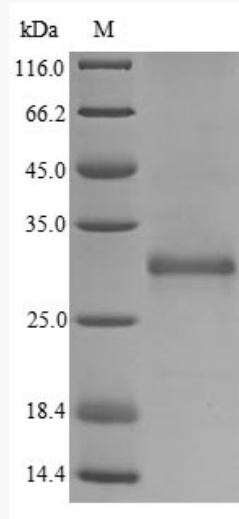
GENE INFORMATION

Gene Name	vwc2l von Willebrand factor C domain containing 2 like [Danio rerio (zebrafish)]
Official Symbol	VWC2L
Synonyms	vwc2l; si:ch211-207d8.1;
Gene ID	100148652
mRNA Refseq	NM_001128564
Protein Refseq	NP_001122036
UniProt ID	B0UZC8

 Tel: 1-631-559-9269 1-516-512-3133

 Email: info@creative-biomart.com  Fax: 1-631-938-8127

 45-1 Ramsey Road, Shirley, NY 11967, USA



(Tris-Glycine gel) Discontinuous SDS-PAGE (reduced) with 5% enrichment gel and 15% separation gel.

 Tel: 1-631-559-9269 1-516-512-3133

 Email: info@creative-biomart.com  Fax: 1-631-938-8127

 45-1 Ramsey Road, Shirley, NY 11967, USA