

Recombinant Rhesus Macaque VWF Protein, His-tagged

Cat. No. VWF-01R Lot. No. (See product label)

SPECIFICATION

Product Overview	Recombinant Rhesus Macaque VWF Protein, His-tagged, was expressed in HEK293.
Species	Rhesus macaque
Source	HEK293
ProteinLength	764-1493 aa
Tag	His
Molecular Mass	82 kDa
AA Sequence	<p>HHHHHHHSLSCRPPMVKLVCPADNPRAEGLECAKTCQNYDLECMGCVSGCL CPPGMVRHENRCVALERCPCLHQGKEYAPGEAVKIDCNTCVCRDRKWNCTDHVC DATCSTIGMAHYLTFDGLKYMFPGECQYVLVQDYCGGNPGTFRILVGNEGCSHPSV KCKKHVTILVEGGEIELFDGEVNVKRPMKDETHFEVVESGRYIILLGKAISVWDRH LSISVVLKQTYQEKVCGLCGNFDGIQNNDLTSSNLQVEEDPVDFGNSWKVSSQCAD TRKVPLDSSPATCHNNLMKQTMVDSSCRILTSDVFQDCNKLVDPEPFLDVCYDTCS CESIGDCACFCDTIAAYAHVCAQHGVVWTRTATLCPQSCEERNLRENGYECEWR YNSCAPACRVTCQHPEPLPCPVQCVEGCHAHCPPGKILDELLQTCVSPEDCPVCEA AGRRFASGKKVTLNPSDPEHCQICHCDGVNLTCEACEEPGGLVVPPTDAPVSPPTP YVEDISEPPLHDFYCSRLLDLVFLLDGSSRLSEAEFEVLKAFVVDMMERLRISQKWV RVAVVEYHDGSHAYIGLKDRKRPSELRRIASQVKYAGSQVASTSEVLKYTLFQIFGKI DRPEASRIALLMASQEPQRMSRNFVRYVQGLKKKKVIVIPVGIGPHANLKQIHLEIK QSPENKAFVLSGVDELEQQRDEIVSYLCDLAPEAPPPTLSPDMAQVTVGPGLLGVS</p>

 Tel: 1-631-559-9269 1-516-512-3133

 Email: info@creative-biomart.com  Fax: 1-631-938-8127

 45-1 Ramsey Road, Shirley, NY 11967, USA

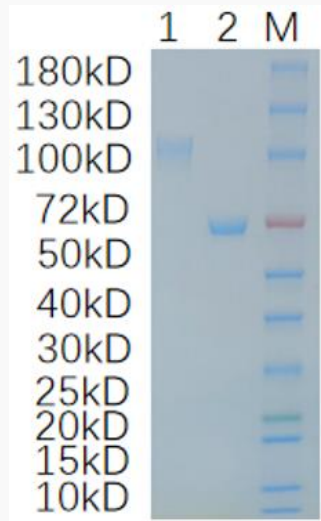
	TLGPKRN
Purity	>90% by SDS-PAGE
Storage	Store it under sterile conditions at -20 to -80 °C. It is recommended that the protein be aliquoted for optimal storage. Avoid repeated freeze-thaw cycles.
Concentration	1mg/ml by BCA
Storage Buffer	Sterile PBS, pH 7.4
GENE INFORMATION	
Gene Name	VWF von Willebrand factor [<i>Macaca mulatta</i> (Rhesus monkey)]
Official Symbol	VWF
Synonyms	VWF,von Willebrand factor
Gene ID	722019
mRNA Refseq	NM_001243086
Protein Refseq	NP_001230015
UniProt ID	F5XVB6

 Tel: 1-631-559-9269 1-516-512-3133

 Email: info@creative-biomart.com  Fax: 1-631-938-8127

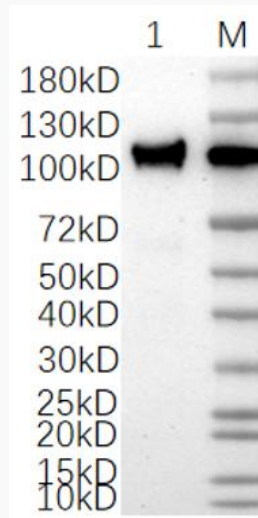
 45-1 Ramsey Road, Shirley, NY 11967, USA

**Reducing 4%-20%
SDS-PAGE (CBB
stained) analysis
profiles of purified
VWF-01R**



1. VWF-01R 1ug
2. BSA 1ug

**WB (Anti-His Mouse
Monoclonal
antibody) analysis
profiles of purified
VWF-01R**



WB

 Tel: 1-631-559-9269 1-516-512-3133

 Email: info@creative-biomart.com  Fax: 1-631-938-8127

 45-1 Ramsey Road, Shirley, NY 11967, USA