

Recombinant Mouse VWF Protein, His tagged

Cat. No. VWF-18420M **Lot. No.** (See product label)

SPECIFICATION

Product Overview	Recombinant Mouse VWF Protein with His tag was expressed in HEK293.
Species	Mouse
Source	HEK293
Description	<p>Predicted to enable several functions, including chaperone binding activity; identical protein binding activity; and integrin binding activity. Acts upstream of or within several processes, including liver development; placenta development; and platelet activation. Located in external side of plasma membrane. Is expressed in several structures, including cardiovascular system; extraembryonic component; genitourinary system; leptomeninges; and vitelline blood vessel. Used to study von Willebrand's disease and von Willebrand's disease 2. Human ortholog(s) of this gene implicated in several diseases, including Behcet's disease; Bernard-Soulier syndrome; end stage renal disease; essential thrombocythemia; and von Willebrand's disease (multiple). Orthologous to human VWF (von Willebrand factor).</p>
Molecular Mass	The protein has a calculated MW of 55 kDa.
AA Sequence	<pre> HHHHHSLSCRPPMVKLVCPADNPRAQGLECAKTCQNYDLERMSLGCVSGCLCPP GMVRHENKCVALERCPCFHQGAEYAPGDTVKIGCNTCVCERERKWNCTNHVCDAT RSAIGMAHYLTFDGLKYLFPGECQYVLVYDYCGSNPGTFQILVGNEGCSYPSVKCR KRVTILVDGGELELFDGEVNVKRPLRDESHFEVVESGRYVILLGQALSVVWDHHLI SVVLKHTYQEQVCGLCGNFDGIQNNDSTTSSLQVEEDPVNFGNSWKVSSQCADTR </pre>

 Tel: 1-631-559-9269 1-516-512-3133

 Email: info@creative-biomart.com  Fax: 1-631-938-8127

 45-1 Ramsey Road, Shirley, NY 11967, USA



KLSLDVSPATCHNNIMKQTMVDSACRILTSDVFQGCNRLVDPEPYLDICIYDTCSCES
IGDCACFCDTIAAYAHVCAQHGGQVVAWRTPTLCPQSCEEKNVRENGYECEWRYNS
CAPACPVTCQHPEPLACPVQCVEGCHAHCPPGRILDELLQTCVDPQDCPVCEVAG
RRLAPGKKITLSPDDPAHCQNCHCDGVNLTCEACQEPGGLVAPPTDAPVSSTTPYV
EDTP

Storage Store it under sterile conditions at -20 to -80 centigrade. It is recommended that the protein be aliquoted for optimal storage. Avoid repeated freeze-thaw cycles.

Concentration 0.018 mg/mL by BCA

Storage Buffer Sterile PB, 500 mM NaCl, pH 7.4

GENE INFORMATION

Gene Name Vwf Von Willebrand factor homolog [*Mus musculus* (house mouse)]

Official Symbol Vwf

Synonyms VWF; Von Willebrand factor homolog; von Willebrand factor; VWD; F8VWF; AI551257; C630030D09; 6820430P06Rik; B130011O06Rik;

Gene ID 22371

mRNA Refseq NM_011708

Protein Refseq NP_035838

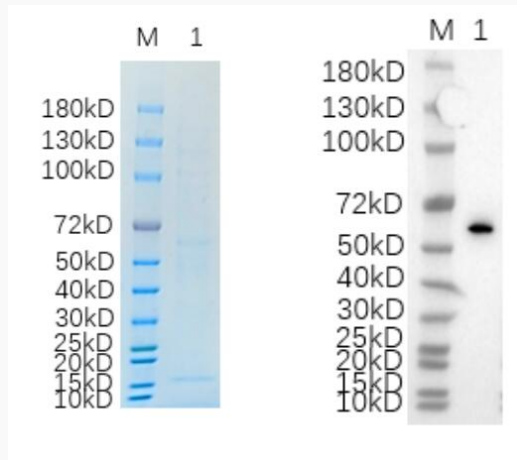
UniProt ID Q8CIZ8

Tel: 1-631-559-9269 1-516-512-3133

Email: info@creative-biomart.com Fax: 1-631-938-8127

45-1 Ramsey Road, Shirley, NY 11967, USA

**Reducing 12% SDS-
PAGE (CBB stained)
and WB (Anti-His
Mouse Monoclonal
antibody) analysis
profile of purified
VWF.**



1. VWF-18420M
2. BSA

 Tel: 1-631-559-9269 1-516-512-3133

 Email: info@creative-biomart.com  Fax: 1-631-938-8127

 45-1 Ramsey Road, Shirley, NY 11967, USA