

Recombinant Mouse VWF Protein (1498-1665 aa), His-Myc-tagged

Cat. No. VWF-2643M **Lot. No.** (See product label)

SPECIFICATION

Product Overview	Recombinant Mouse VWF Protein (1498-1665 aa) is produced by Yeast expression system. This protein is fused with a 6xHis tag at the N-terminal and a Myc tag at the C-terminal. Research Area: Cancer. Protein Description: Partial.
Species	Mouse
Source	Yeast
ProteinLength	1498-1665 aa
Form	Tris-based buffer,50% glycerol
Molecular Mass	22.3 kDa
AA Sequence	DVVFVLEGSDEVGEANFNKSKEFVEEVIQRMDVSPDATRISVLQYSYVTMEYAFNG AQSKEEVLRHVREIRYQGGNRTNTGQALQYLSEHSFSPSQGDRVEAPNLVYVMVTG NPASDEIKRLPGDIQVPIGVGPHANMQELERISRPIAPIFIRDFETLPREAPDLV
Purity	> 85% as determined by SDS-PAGE.
Notes	Repeated freezing and thawing is not recommended. Store working aliquots at 4 centigrade for up to one week.
Storage	The shelf life is related to many factors, storage state, buffer ingredients, storage

 Tel: 1-631-559-9269 1-516-512-3133

 Email: info@creative-biomart.com  Fax: 1-631-938-8127

 45-1 Ramsey Road, Shirley, NY 11967, USA

temperature and the stability of the protein itself. Generally, the shelf life of liquid form is 6 months at -20 centigrade/-80 centigrade. The shelf life of lyophilized form is 12 months at -20 centigrade/-80 centigrade.

Concentration

A hardcopy of COA will be sent along with the products. Please refer to it for detailed information.

GENE INFORMATION

Gene Name [Vwf Von Willebrand factor homolog \[Mus musculus \]](#)

Official Symbol [VWF](#)

Synonyms VWF; von Willebrand factor; VWD; F8VWF; AI551257; C630030D09; 6820430P06Rik; B130011O06Rik;

Gene ID [22371](#)

mRNA Refseq [NM_011708](#)

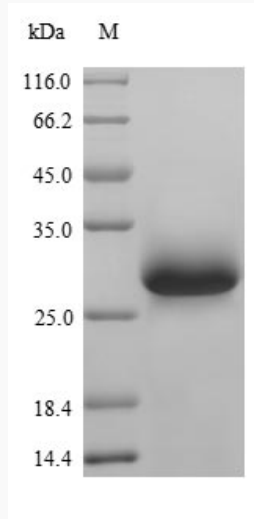
Protein Refseq [NP_035838](#)

UniProt ID [Q8CIZ8](#)

 Tel: 1-631-559-9269 1-516-512-3133

 Email: info@creative-biomart.com  Fax: 1-631-938-8127

 45-1 Ramsey Road, Shirley, NY 11967, USA



(Tris-Glycine gel) Discontinuous SDS-PAGE (reduced) with 5% enrichment gel and 15% separation gel.

 Tel: 1-631-559-9269 1-516-512-3133

 Email: info@creative-biomart.com  Fax: 1-631-938-8127

 45-1 Ramsey Road, Shirley, NY 11967, USA