

Recombinant Mouse Vangl1 protein, His & T7-tagged

Cat. No. Vangl1-1483M Lot. No. (See product label)

SPECIFICATION

Product Overview	Recombinant Mouse Vangl1 aa. (Val229~Gly476 (Accession # Q80Z96)) fused with N-terminal His & T7 tag was produced in E. coli cells.
Species	Mouse
Source	E.coli
ProteinLength	Val229~Gly476
Form	Freeze-dried powder
Molecular Mass	Predicted Molecular Mass: 32.4kDa
Endotoxin	<1.0EU per 1ug (determined by the LAL method)
Purity	>95%
Applications	SDS-PAGE; WB; ELISA; IP.
Stability	The thermal stability is described by the loss rate. The loss rate was determined by accelerated thermal degradation test, that is, incubate the protein at 37°C for 48h, and no obvious degradation and precipitation were observed. The loss rate is less than 5% within the expiration date under appropriate storage condition.
Storage	Avoid repeated freeze/thaw cycles. Store at 2-8°C for one month. Aliquot and store at

 Tel: 1-631-559-9269 1-516-512-3133

 Email: info@creative-biomart.com  Fax: 1-631-938-8127

 45-1 Ramsey Road, Shirley, NY 11967, USA

-80°C for 12 months.

Storage buffer Supplied as lyophilized form in PBS, pH7.4, containing 5% sucrose, 0.01% sarcosyl.

Reconstitution Reconstitute in sterile PBS, pH7.2-pH7.4.

Isoelectric Point 9.5

GENE INFORMATION

Gene Name [Vangl1 vang-like 1 \(van gogh, Drosophila\) \[Mus musculus \(house mouse\) \]](#)

Official Symbol [Vangl1](#)

Synonyms Vangl1; vang-like 1 (van gogh, Drosophila); Lpp2; Stb2; Stbm; Kitenin; vang-like protein 1; KAI1 COOH-terminal interacting tetraspanin; loop-tail protein 2; strabismus; van Gogh-like protein 1; vang, van gogh-like 1

Gene ID [229658](#)

mRNA Refseq [NM_177545.5](#)

Protein Refseq [NP_808213.2](#)

UniProt ID [Q80Z96](#)

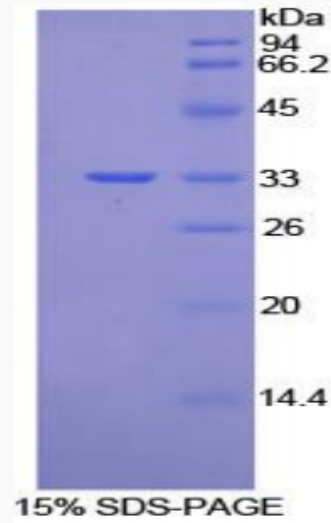
 Tel: 1-631-559-9269 1-516-512-3133

 Email: info@creative-biomart.com  Fax: 1-631-938-8127

 45-1 Ramsey Road, Shirley, NY 11967, USA



SDS-PAGE



Tel: 1-631-559-9269 1-516-512-3133

Email: info@creative-biomart.com Fax: 1-631-938-8127

45-1 Ramsey Road, Shirley, NY 11967, USA