

Recombinant Rat Vcam1 Protein, His-tagged

Cat. No. Vcam1-551R **Lot. No.** (See product label)

SPECIFICATION

Product Overview	Recombinant Rat Vcam1 Protein (Ala20-Thr682) with N-His tag was expressed in E. coli.
Species	Rat
Source	E.coli
ProteinLength	Ala20-Thr682
Description	Enables integrin binding activity. Involved in several processes, including cellular response to tumor necrosis factor; nervous system development; and response to lipopolysaccharide. Located in cell surface; extracellular space; and sarcolemma. Used to study carotid stenosis and hypertension. Biomarker of several diseases, including artery disease (multiple); chronic kidney disease; colitis; periodontitis; and thromboangiitis obliterans. Orthologous to human VCAM1 (vascular cell adhesion molecule 1).
Form	Freeze-dried powder
Molecular Mass	Predicted Molecular Mass: 76.5 kDa Accurate Molecular Mass: 77 kDa
Purity	> 90%
Applications	Positive Control; Immunogen; SDS-PAGE; WB.

 Tel: 1-631-559-9269 1-516-512-3133

 Email: info@creative-biomart.com  Fax: 1-631-938-8127

 45-1 Ramsey Road, Shirley, NY 11967, USA

Stability	The thermal stability is described by the loss rate. The loss rate was determined by accelerated thermal degradation test, that is, incubate the protein at 37 centigrade for 48h, and no obvious degradation and precipitation were observed. The loss rate is less than 5% within the expiration date under appropriate storage condition.
Storage	Avoid repeated freeze/thaw cycles. Store at 2-8 centigrade for one month. Aliquot and store at -80 centigrade for 12 months.
Storage Buffer	20mM Tris, 150mM NaCl, pH8.0, containing 1mM EDTA, 1mM DTT, 0.01% SKL, 5% Trehalose and Proclin300.
Reconstitution	Reconstitute in sterile water to a concentration of 0.1-1.0 mg/mL. Do not vortex.

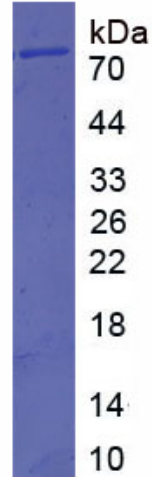
GENE INFORMATION

Gene Name	Vcam1 vascular cell adhesion molecule 1 [Rattus norvegicus (Norway rat)]
Official Symbol	Vcam1
Synonyms	VCAM1; vascular cell adhesion molecule 1; vascular cell adhesion protein 1; VCAM-1; V-CAM 1; VCAM1B; MGC108734
Gene ID	25361
mRNA Refseq	NM_012889
Protein Refseq	NP_037021
UniProt ID	P29534

 Tel: 1-631-559-9269 1-516-512-3133

 Email: info@creative-biomart.com  Fax: 1-631-938-8127

 45-1 Ramsey Road, Shirley, NY 11967, USA



Tel: 1-631-559-9269 1-516-512-3133

Email: info@creative-biomart.com Fax: 1-631-938-8127

45-1 Ramsey Road, Shirley, NY 11967, USA