

Recombinant Rat Vipr1 protein, His & T7-tagged

Cat. No. Vipr1-7929R **Lot. No.** (See product label)

SPECIFICATION

Product Overview	Recombinant Rat Vipr1 aa. (Gln34~Gly146 (Accession # P30083)) fused with N-terminal His & T7 tag was produced in E. coli cells.
Species	Rat
Source	E.coli
ProteinLength	Gln34~Gly146
Description	Transmembrane receptor for vasoactive intestinal polypeptide (VIP); associated with a G-protein which activates adenylate cyclase.
Form	Freeze-dried powder
Molecular Mass	Predicted Molecular Mass: 16.6kDa.
Endotoxin	<1.0EU per 1ug (determined by the LAL method)
Purity	>95%
Characteristic	The isoelectric point is 4.7.
Applications	SDS-PAGE; WB; ELISA; IP.
Stability	The thermal stability is described by the loss rate of the target protein. The loss rate

 Tel: 1-631-559-9269 1-516-512-3133

 Email: info@creative-biomart.com  Fax: 1-631-938-8127

 45-1 Ramsey Road, Shirley, NY 11967, USA

was determined by accelerated thermal degradation test, that is, incubate the protein at 37°C for 48h, and no obvious degradation and precipitation were observed. (Referring from China Biological Products Standard, which was calculated by the Arrhenius equation.) The loss of this protein is less than 5% within the expiration date under appropriate storage condition.

Storage	Avoid repeated freeze/thaw cycles. Store at 2-8°C for one month. Aliquot and store at -80°C for 12 months.
Storage Buffer	Supplied as lyophilized form in PBS, pH7.4, containing 5% trehalose, 0.01% sarcosyl.
Reconstitution	Reconstitute in sterile PBS, pH7.2-pH7.4.

GENE INFORMATION

Gene Name	Vipr1 vasoactive intestinal peptide receptor 1 [<i>Rattus norvegicus</i> (Norway rat)]
Official Symbol	Vipr1
Synonyms	Vipr1; vasoactive intestinal peptide receptor 1; vasoactive intestinal polypeptide receptor 1; PACAP type II receptor; pituitary adenylate cyclase-activating polypeptide type II receptor
Gene ID	24875
mRNA Refseq	NM_012685.2
Protein Refseq	NP_036817.1
UniProt ID	P30083

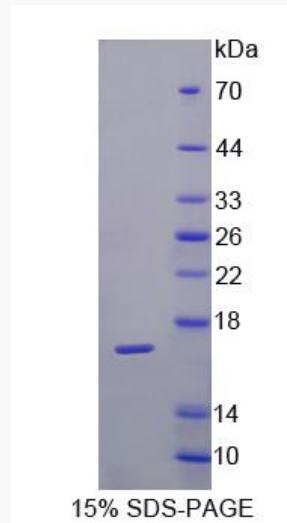
 Tel: 1-631-559-9269 1-516-512-3133

 Email: info@creative-biomart.com  Fax: 1-631-938-8127

 45-1 Ramsey Road, Shirley, NY 11967, USA



SDS-PAGE



Tel: 1-631-559-9269 1-516-512-3133

Email: info@creative-biomart.com Fax: 1-631-938-8127

45-1 Ramsey Road, Shirley, NY 11967, USA