

## Recombinant Rat Vpreb1 protein, His & T7-tagged

**Cat. No.** Vpreb1-5650R    **Lot. No.** (See product label)

### SPECIFICATION

<b>Product Overview</b>	Recombinant Rat Vpreb1 aa. (Leu43~Met128 (Accession # D3Z922)) fused with N-terminal His & T7 tag was produced in E. coli cells.
<b>Species</b>	Rat
<b>Source</b>	E.coli
<b>ProteinLength</b>	Leu43~Met128
<b>Description</b>	Mouse homolog forms a surrogate light chain in the pre-B cell receptor and plays a role in B-cell proliferation and expansion.
<b>Form</b>	Freeze-dried powder
<b>Molecular Mass</b>	Predicted Molecular Mass: 13.8kDa
<b>Endotoxin</b>	<1.0EU per 1g (determined by the LAL method)
<b>Purity</b>	>95%
<b>Characteristic</b>	The isoelectric point is 9.4.
<b>Applications</b>	SDS-PAGE; WB; ELISA; IP.
<b>Stability</b>	The thermal stability is described by the loss rate. The loss rate was determined by

 Tel: 1-631-559-9269    1-516-512-3133

 Email: [info@creative-biomart.com](mailto:info@creative-biomart.com)     Fax: 1-631-938-8127

 45-1 Ramsey Road, Shirley, NY 11967, USA

accelerated thermal degradation test, that is, incubate the protein at 37°C for 48h, and no obvious degradation and precipitation were observed. The loss rate is less than 5% within the expiration date under appropriate storage condition.

**Storage**

Avoid repeated freeze/thaw cycles. Store at 2-8°C for one month. Aliquot and store at -80°C for 12 months.

**Storage buffer**

Supplied as lyophilized form in PBS, pH7.4, containing 5% trehalose, 0.01% sarcosyl.

**Reconstitution**

Reconstitute in sterile PBS, pH7.2-pH7.4.

## GENE INFORMATION

**Gene Name**

Vpreb1 V-set pre-B cell surrogate light chain 1 [ *Rattus norvegicus* (Norway rat) ]

**Official Symbol**

Vpreb1

**Synonyms**

Vpreb1; V-set pre-B cell surrogate light chain 1; immunoglobulin iota chain; Immunoglobulin lambda Vpreb1 chain; immunoglobulin omega chain-like; pre-B lymphocyte 1; pre-B lymphocyte gene 1

**Gene ID**

303782

**mRNA Refseq**

NM\_001108845.1

**Protein Refseq**

NP\_001102315.1

**UniProt ID**

D3Z922

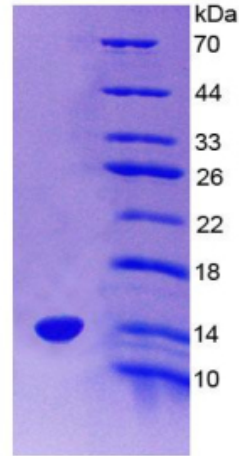
 Tel: 1-631-559-9269 1-516-512-3133

 Email: [info@creative-biomart.com](mailto:info@creative-biomart.com)  Fax: 1-631-938-8127

 45-1 Ramsey Road, Shirley, NY 11967, USA



SDS-PAGE



15% SDS-PAGE

Tel: 1-631-559-9269 1-516-512-3133

Email: [info@creative-biomart.com](mailto:info@creative-biomart.com) Fax: 1-631-938-8127

45-1 Ramsey Road, Shirley, NY 11967, USA