

Recombinant Mouse Vps29 Protein, His-tagged

Cat. No. Vps29-7397M **Lot. No.** (See product label)

SPECIFICATION

Product Overview	Recombinant Mouse VPS29 protein, fused to His-tag at N-terminus, was expressed in E. coli and purified by using conventional chromatography techniques.
Species	Mouse
Source	E.coli
ProteinLength	1-182
Description	Acts as component of the retromer cargo-selective complex (CSC). The CSC is believed to be the core functional component of retromer or respective retromer complex variants acting to prevent missorting of selected transmembrane cargo proteins into the lysosomal degradation pathway. The recruitment of the CSC to the endosomal membrane involves RAB7A and SNX3. The SNX-BAR retromer mediates retrograde transport of cargo proteins from endosomes to the trans-Golgi network (TGN) and is involved in endosome-to-plasma membrane transport for cargo protein recycling. The SNX3-retromer mediates the retrograde endosome-to-TGN transport of WLS distinct from the SNX-BAR retromer pathway. The SNX27-retromer is believed to be involved in endosome-to-plasma membrane trafficking and recycling of a broad spectrum of cargo proteins. The CSC seems to act as recruitment hub for other proteins, such as the WASH complex and TBC1D5. Required to regulate transcytosis of the polymeric immunoglobulin receptor (pIgR-pIgA). Acts also as component of the retriever complex. The retriever complex is a heterotrimeric complex related to retromer cargo-selective complex (CSC) and essential for retromer-independent

 Tel: 1-631-559-9269 1-516-512-3133

 Email: info@creative-biomart.com  Fax: 1-631-938-8127

 45-1 Ramsey Road, Shirley, NY 11967, USA

retrieval and recycling of numerous cargos such as integrin alpha-5/beta-1 (ITGA5:ITGB1). In the endosomes, retriever complex drives the retrieval and recycling of NxxY-motif-containing cargo proteins by coupling to SNX17, a cargo essential for the homeostatic maintenance of numerous cell surface proteins associated with processes that include cell migration, cell adhesion, nutrient supply and cell signaling. The recruitment of the retriever complex to the endosomal membrane involves CCC and WASH complexes. Involved in GLUT1 endosome-to-plasma membrane trafficking; the function is dependent of association with ANKRD27. Has no activity towards p-nitrophenylphosphate, p-nitrophenylphosphorylcholine or phosphatidylinositolphosphates or a phosphorylated peptide derived from retromer cargo (in vitro).

Form Liquid

Molecular Mass 23.2 kDa

AA Sequence

MGSSHHHHHSSGLVPRGSHMGSHMMLVVLGDLHIPHCNSLPAKFKLLVPGKI
QHILCTGNLCTKESYDYDKTLAGDVHIVRGDFDENLNYPEQKVVTVGQFKIGLIHGHQ
VIPWGDMA SLALLQRQFDVDILISGHTHKFEAFEHENKFYINPGSATGAYNALETNIIP
SFVLMDIQASTVVVYVYQLIGDDVKVERIEYKKS

Purity > 95 % by SDS-PAGE

Stability Shelf life: one year from despatch.

Storage Store undiluted at 2-8 centigrade for one week or (in aliquots) at -20 to -80 centigrade for longer. Avoid repeated freezing and thawing.

Concentration 0.5 mg/mL (determined by Bradford assay)

 Tel: 1-631-559-9269 1-516-512-3133

 Email: info@creative-biomart.com  Fax: 1-631-938-8127

 45-1 Ramsey Road, Shirley, NY 11967, USA

Storage Buffer 20 mM Tris-HCl buffer (pH 8.0) containing 1 mM DTT, 10 % glycerol, 0.1 M NaCl

GENE INFORMATION

Gene Name [Vps29 VPS29 retromer complex component \[Mus musculus \(house mouse\) \]](#)

Official Symbol [Vps29](#)

Synonyms Vps29; VPS29 retromer complex component; PEP; PEP11; AW049835; 2010015D08Rik; vacuolar protein sorting-associated protein 29; vacuolar protein sorting 29; vacuolar sorting protein 29; vesicle protein sorting 29; EC 3.1.3.3

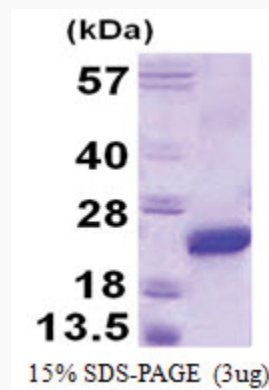
Gene ID [56433](#)

mRNA Refseq [NM_001347453](#)

Protein Refseq [NP_001334382](#)

UniProt ID [Q9QZ88](#)

SDS-PAGE



 Tel: 1-631-559-9269 1-516-512-3133

 Email: info@creative-biomart.com  Fax: 1-631-938-8127

 45-1 Ramsey Road, Shirley, NY 11967, USA