

Recombinant Rat Vwf protein, His-tagged

Cat. No. Vwf-7788R **Lot. No.** (See product label)

SPECIFICATION

Product Overview	Recombinant Rat Vwf aa. (Lys49~Asn230) fused with N-terminal His tag was produced in E. coli cells.
Species	Rat
Source	E.coli
ProteinLength	Lys49~Asn230
Description	Human homolog is a plasma glycoprotein that mediates platelet adhesion to damaged blood vessels and stabilizes blood coagulation factor VIII.
Form	Freeze-dried powder
Molecular Mass	22kDa as determined by SDS-PAGE reducing conditions
Endotoxin	<1.0EU per 1g (determined by the LAL method)
Purity	>95%
Characteristic	The isoelectric point is 9.8.
Applications	SDS-PAGE; WB; ELISA; IP; CoIP; Purification; Amine Reactive Labeling
Stability	The thermal stability is described by the loss rate. The loss rate was determined by

 Tel: 1-631-559-9269 1-516-512-3133

 Email: info@creative-biomart.com  Fax: 1-631-938-8127

 45-1 Ramsey Road, Shirley, NY 11967, USA

accelerated thermal degradation test, that is, incubate the protein at 37°C for 48h, and no obvious degradation and precipitation were observed. The loss rate is less than 5% within the expiration date under appropriate storage condition.

Storage

Avoid repeated freeze/thaw cycles. Store at 2-8°C for one month. Aliquot and store at -80°C for 12 months.

Concentration

200µg/mL

Storage buffer

PBS, pH7.4, containing 1mM DTT, 5% trehalose, 0.01% sarcosyl and Proclin300.

Reconstitution

Reconstitute in PBS (pH7.4) to a concentration of 0.1-1.0 mg/mL. Do not vortex.

GENE INFORMATION

Gene Name

Vwf von Willebrand factor [*Rattus norvegicus* (Norway rat)]

Official Symbol

Vwf

Synonyms

Vwf; von Willebrand factor

Gene ID

116669

mRNA Refseq

NM_053889.1

Protein Refseq

NP_446341.1

UniProt ID

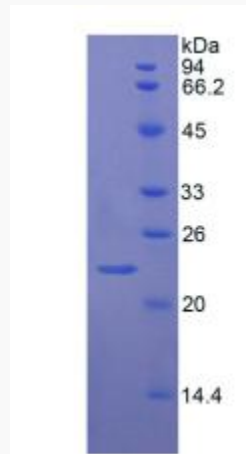
Q62935

 Tel: 1-631-559-9269 1-516-512-3133

 Email: info@creative-biomart.com  Fax: 1-631-938-8127

 45-1 Ramsey Road, Shirley, NY 11967, USA

SDS-PAGE



 Tel: 1-631-559-9269 1-516-512-3133

 Email: info@creative-biomart.com  Fax: 1-631-938-8127

 45-1 Ramsey Road, Shirley, NY 11967, USA