

# Recombinant Human WASP actin nucleation promoting factor Protein, His tagged

Cat. No. WAS-001H Lot. No. (See product label)

## SPECIFICATION

<b>Product Overview</b>	Recombinant Human WAS Protein (230-310aa) with His tag was expressed in E. coli.
<b>Species</b>	Human
<b>Source</b>	E.coli
<b>ProteinLength</b>	230-310aa

### Description

The Wiskott-Aldrich syndrome (WAS) family of proteins share similar domain structure, and are involved in transduction of signals from receptors on the cell surface to the actin cytoskeleton. The presence of a number of different motifs suggests that they are regulated by a number of different stimuli, and interact with multiple proteins. Recent studies have demonstrated that these proteins, directly or indirectly, associate with the small GTPase, Cdc42, known to regulate formation of actin filaments, and the cytoskeletal organizing complex, Arp2/3. Wiskott-Aldrich syndrome is a rare, inherited, X-linked, recessive disease characterized by immune dysregulation and microthrombocytopenia, and is caused by mutations in the WAS gene. The WAS gene product is a cytoplasmic protein, expressed exclusively in hematopoietic cells, which show signalling and cytoskeletal abnormalities in WAS patients. A transcript variant arising as a result of alternative promoter usage, and containing a different 5' UTR sequence, has been described, however, its full-length nature is not known.

 Tel: 1-631-559-9269 1-516-512-3133

 Email: [info@creative-biomart.com](mailto:info@creative-biomart.com)  Fax: 1-631-938-8127

 45-1 Ramsey Road, Shirley, NY 11967, USA

<b>Tag</b>	C-His
<b>Molecular Mass</b>	10 kDa
<b>AA Sequence</b>	MKKKISKADIGAPSGFKHVSHVGVDPQNGFDVNNLDPDLRSLFSRAGISEAQLTDA ETSKLIYDFIEDQGGLEAVRQEMRRQHSHHHHHHH
<b>Endotoxin</b>	< 1 EU/μg by LAL
<b>Purity</b>	> 90% by SDS-PAGE
<b>Storage</b>	Store it under sterile conditions at -20 to -80 centigrade. It is recommended that the protein be aliquoted for optimal storage. Avoid repeated freeze-thaw cycles.
<b>Storage Buffer</b>	Sterile PBS, pH7.4, 10% Glycerol
<b>Concentration</b>	1 mg/mL by BCA

## GENE INFORMATION

<b>Gene Name</b>	WAS WASP actin nucleation promoting factor [ Homo sapiens (human) ]
<b>Official Symbol</b>	WAS
<b>Synonyms</b>	WAS; WASP actin nucleation promoting factor; THC; IMD2; SCNX; THC1; WASP; WASPA; actin nucleation-promoting factor WAS; eczema-thrombocytopenia; thrombocytopenia 1 (X-linked); wiskott-Aldrich syndrome protein
<b>Gene ID</b>	7454
<b>mRNA Refseq</b>	NM_000377

 Tel: 1-631-559-9269 1-516-512-3133

 Email: [info@creative-biomart.com](mailto:info@creative-biomart.com)  Fax: 1-631-938-8127

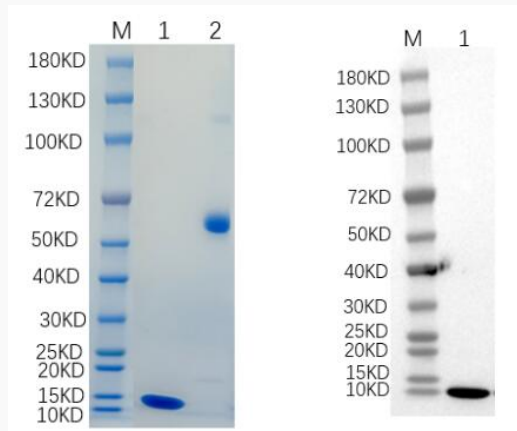
 45-1 Ramsey Road, Shirley, NY 11967, USA

**Protein Refseq** NP\_000368

**MIM** 300392

**UniProt ID** P42768

**Reducing 4%-20%  
SDS-PAGE (CBB  
stained) and WB  
(Anti-His Mouse  
Monoclonal  
antibody) analysis  
profiles of purified  
WAS.**



1. WAS
2. BSA

 Tel: 1-631-559-9269 1-516-512-3133

 Email: [info@creative-biomart.com](mailto:info@creative-biomart.com)  Fax: 1-631-938-8127

 45-1 Ramsey Road, Shirley, NY 11967, USA