

Recombinant Human WAS Protein, Myc/DDK-tagged, C13 and N15-labeled

Cat. No. WAS-6714H Lot. No. (See product label)

SPECIFICATION

Product Overview

WAS MS Standard C13 and N15-labeled recombinant protein (NP_000368) with a C-terminal MYC/DDK tag, was expressed in HEK293 cells.

Species

Human

Source

HEK293

Description

The Wiskott-Aldrich syndrome (WAS) family of proteins share similar domain structure, and are involved in transduction of signals from receptors on the cell surface to the actin cytoskeleton. The presence of a number of different motifs suggests that they are regulated by a number of different stimuli, and interact with multiple proteins. Recent studies have demonstrated that these proteins, directly or indirectly, associate with the small GTPase, Cdc42, known to regulate formation of actin filaments, and the cytoskeletal organizing complex, Arp2/3. Wiskott-Aldrich syndrome is a rare, inherited, X-linked, recessive disease characterized by immune dysregulation and microthrombocytopenia, and is caused by mutations in the WAS gene. The WAS gene product is a cytoplasmic protein, expressed exclusively in hematopoietic cells, which show signalling and cytoskeletal abnormalities in WAS patients. A transcript variant arising as a result of alternative promoter usage, and containing a different 5' UTR sequence, has been described, however, its full-length nature is not known.

Molecular Mass

52.7 kDa

 Tel: 1-631-559-9269 1-516-512-3133

 Email: info@creative-biomart.com  Fax: 1-631-938-8127

 45-1 Ramsey Road, Shirley, NY 11967, USA

AA Sequence

MSGGPMGGRPGGRGAPAVQQNIPSTLLQDHENQRLFEMLGRKCLTLATAVVQLYL
 ALPPGAEHWTKHEHCGAVCFVKDNPQKSYFIRLYGLQAGRLLWEQELYSQLVYSTPT
 PFFHTFAGDDCQAGLNFADEDEAQAFRALVQEKIQRNQRQSGDRRQLPPPPTPA
 NEERRGLPLPLHPGGDQGGPPVGPLSLGLATVDIQNPDITSSRYRGLPAPGSPS
 ADKKRSGKKKISKADIGAPSGFKHVSHVSWDPQNGFDVNNLDPDLRSLFSRAGISE
 AQLTDAETSCLIYDFIEDQGGLEAVRQEMRRQEPLPPPPPPSRGGNQLPRPPIVGG
 NKGRSGPLPPVPLGIAPPPTPRGPPPPGRGGPPPPPPATGRSGPLPPPPPGAG
 GPPMPPPPPPPPSSGNGPAPPPLPPALVPAGGLAPGGGRGALLDQIRQGIQLN
 KTPGAPESSALQPPQSSSEGLVGALMHVMQKRSRAIHSSDEGEDQAGDEDEDDE
 WDDTRTRPLEQKLISEEDLAANDILDYKDDDDKV

Purity > 80% as determined by SDS-PAGE and Coomassie blue staining

Stability Stable for 3 months from receipt of products under proper storage and handling conditions.

Storage Store at -80 centigrade. Avoid repeated freeze-thaw cycles.

Concentration 50 µg/mL as determined by BCA

Storage Buffer 100 mM glycine, 25 mM Tris-HCl, pH 7.3.

GENE INFORMATION

Gene Name WAS WASP actin nucleation promoting factor [Homo sapiens (human)]

Official Symbol WAS

Synonyms WAS; WASP actin nucleation promoting factor; THC; IMD2; SCNX; THC1; WASP; WASPA; wiskott-Aldrich syndrome protein; eczema-thrombocytopenia; thrombocytopenia 1 (X-linked)

 Tel: 1-631-559-9269 1-516-512-3133

 Email: info@creative-biomart.com  Fax: 1-631-938-8127

 45-1 Ramsey Road, Shirley, NY 11967, USA

Gene ID 7454

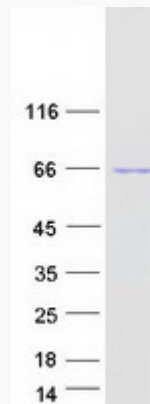
mRNA Refseq NM_000377

Protein Refseq NP_000368

MIM 300392

UniProt ID P42768

SDS-PAGE



 Tel: 1-631-559-9269 1-516-512-3133

 Email: info@creative-biomart.com  Fax: 1-631-938-8127

 45-1 Ramsey Road, Shirley, NY 11967, USA