

# Recombinant Human WAS protein family, member 1 Protein, His-tagged

**Cat. No.** WASF1-001H    **Lot. No.** (See product label)

## SPECIFICATION

<b>Product Overview</b>	Recombinant Human WAS protein family, member 1 Protein (1-250 aa) with His tag was expressed in E. coli.
<b>Species</b>	Human
<b>Source</b>	E.coli
<b>ProteinLength</b>	1-250 aa
<b>Description</b>	The protein encoded by this gene, a member of the Wiskott-Aldrich syndrome protein (WASP)-family, plays a critical role downstream of Rac, a Rho-family small GTPase, in regulating the actin cytoskeleton required for membrane ruffling. It has been shown to associate with an actin nucleation core Arp2/3 complex while enhancing actin polymerization in vitro. Wiskott-Aldrich syndrome is a disease of the immune system, likely due to defects in regulation of actin cytoskeleton. Multiple alternatively spliced transcript variants encoding the same protein have been found for this gene.
<b>Tag</b>	His
<b>Molecular Mass</b>	30 kDa
<b>AA Sequence</b>	MPLVKRNIDPRHLCHTALPRGIKNELECVTNISLANIIRQLSSLSKYAEDIFGELFNEAH SFSFRVNSLQERVDRLSVSVTQLDPKEEELSLQDITMRKAFRSSTIQDQQLFDRKTL PIPLQETYDVCEQPPLNILTPYRDDGKEGLKFYTNPSYFFDLWKEKMLQDTEDKRK

 Tel: 1-631-559-9269    1-516-512-3133

 Email: [info@creative-biomart.com](mailto:info@creative-biomart.com)     Fax: 1-631-938-8127

 45-1 Ramsey Road, Shirley, NY 11967, USA

EKRKQKQKNLDRPHEPEKVPRAHPDRRREWQKLAQGPELAEDDANLLHKHIEVAN  
GPASHFETRPQTYVDHMDGSYHHHHHHHH

**Endotoxin** < 1 EU/μg by LAL

**Purity** > 90% by SDS-PAGE

**Storage** Store it under sterile conditions at -20 to -80 centigrade. It is recommended that the protein be aliquoted for optimal storage. Avoid repeated freeze-thaw cycles.

**Storage Buffer** Sterile PBS, pH7.4, 10% Glycerol, 0.5% SKL

**Concentration** 1 mg/mL by BCA

## GENE INFORMATION

**Gene Name** WASF1 WAS protein family, member 1 [ Homo sapiens (human) ]

**Official Symbol** WASF1

**Synonyms** WASF1; WAS protein family, member 1; wiskott-Aldrich syndrome protein family member 1; KIAA0269; SCAR1; WAVE; WAVE1; protein WAVE-1; WASP family protein member 1; homology of dictyostelium scar 1; verprolin homology domain-containing protein 1; FLJ31482

**Gene ID** 8936

**mRNA Refseq** NM\_001024934

**Protein Refseq** NP\_001020105

 Tel: 1-631-559-9269 1-516-512-3133

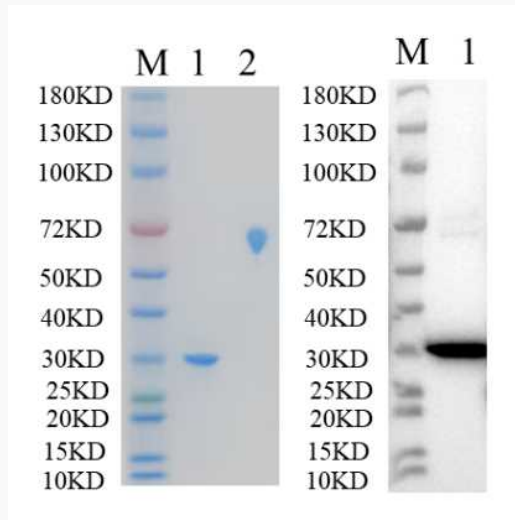
 Email: [info@creative-biomart.com](mailto:info@creative-biomart.com)  Fax: 1-631-938-8127

 45-1 Ramsey Road, Shirley, NY 11967, USA

MIM 605035

UniProt ID Q92558

Reducing 4%-20%  
SDS-PAGE (CBB  
stained) and WB  
(Anti-His Mouse  
Monoclonal  
antibody) analysis  
profiles of purified  
WASF1.



1. WASF1: 1  $\mu$ g
2. BSA: 1  $\mu$ g

Tel: 1-631-559-9269 1-516-512-3133

Email: [info@creative-biomart.com](mailto:info@creative-biomart.com) Fax: 1-631-938-8127

45-1 Ramsey Road, Shirley, NY 11967, USA