

Recombinant Human WASF2 protein, His-GST-tagged

Cat. No. WASF2-3357H Lot. No. (See product label)

SPECIFICATION

Product Overview	Recombinant Human WASF2 protein(Met1~Asp435), fused with N-terminal His and GST Tag, was expressed in E.coli.
Species	Human
Source	E.coli
ProteinLength	Met1~Asp435
Form	PBS, pH7.4, containing 0.01% SKL, 1mM DTT, 5% Trehalose and Proclin300.
Molecular Mass	46kDa
Endotoxin	<1.0EU per 1g (determined by the LAL method)
Purity	> 80%
Storage	Avoid repeated freeze/thaw cycles. Store at 2-8°C for one month. Aliquot and store at -80°C for 12 months.
Reconstitution	Reconstitute in 10mM PBS (pH7.4) to a concentration of 0.1-1.0 mg/mL. Do not vortex.

GENE INFORMATION

 Tel: 1-631-559-9269 1-516-512-3133

 Email: info@creative-biomart.com  Fax: 1-631-938-8127

 45-1 Ramsey Road, Shirley, NY 11967, USA

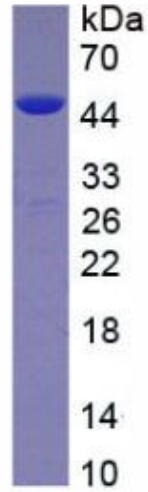
Gene Name	WASF2 WAS protein family, member 2 [Homo sapiens]
Official Symbol	WASF2
Synonyms	WASF2; WAS protein family, member 2; wiskott-Aldrich syndrome protein family member 2; SCAR2; WAVE2; IMD2; protein WAVE-2; WASP family protein member 2; WASP family protein member 4; WASP family Verprolin-homologous protein 2; verprolin homology domain-containing protein 2; suppressor of cyclic-AMP receptor (WASP-family); Putative Wiskott-Aldrich syndrome protein family member 4; WASF4; dJ393P12.2;
Gene ID	10163
mRNA Refseq	NM_001201404
Protein Refseq	NP_001188333
MIM	605875
UniProt ID	Q9Y6W5

 Tel: 1-631-559-9269 1-516-512-3133

 Email: info@creative-biomart.com  Fax: 1-631-938-8127

 45-1 Ramsey Road, Shirley, NY 11967, USA

SDS-PAGE



 Tel: 1-631-559-9269 1-516-512-3133

 Email: info@creative-biomart.com  Fax: 1-631-938-8127

 45-1 Ramsey Road, Shirley, NY 11967, USA